

GNA11 Antibody(N-term)

Peptide Affinity Purified Rabbit Polyclonal Antibody (Pab)

Catalog # AP19441a

Specification

GNA11 Antibody(N-term) - Product Information

Application	WB,E
Primary Accession	P29992
Other Accession	O9JID2 , O2XSV9 , P21278 , P38409 , NP_002058.2
Reactivity Predicted	Human Bovine, Mouse, Pig, Rat
Host	Rabbit
Clonality	Polyclonal
Isotype	Rabbit Ig
Antigen Region	1-30

GNA11 Antibody(N-term) - Additional Information

Gene ID 2767

Other Names

Guanine nucleotide-binding protein subunit alpha-11, G alpha-11, G-protein subunit alpha-11, Guanine nucleotide-binding protein G(y) subunit alpha, GNA11, GA11

Target/Specificity

This GNA11 antibody is generated from rabbits immunized with a KLH conjugated synthetic peptide between 1-30 amino acids from the N-terminal region of human GNA11.

Dilution

WB~~1:1000

Format

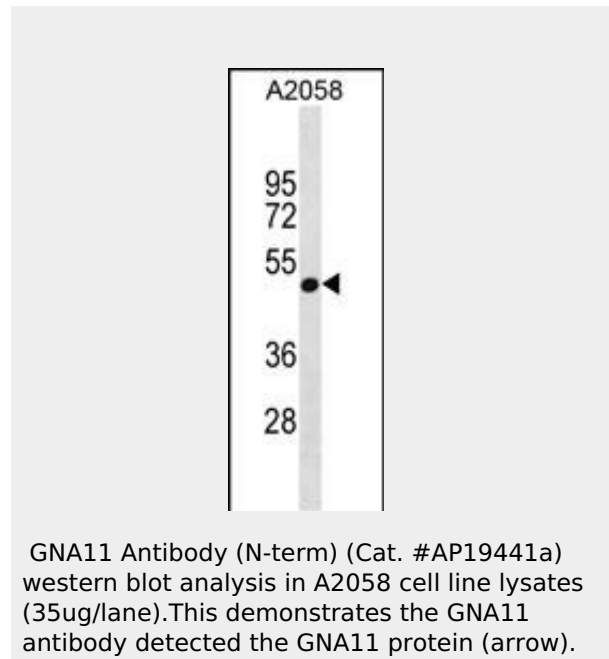
Purified polyclonal antibody supplied in PBS with 0.09% (W/V) sodium azide. This antibody is purified through a protein A column, followed by peptide affinity purification.

Storage

Maintain refrigerated at 2-8°C for up to 2 weeks. For long term storage store at -20°C in small aliquots to prevent freeze-thaw cycles.

Precautions

GNA11 Antibody(N-term) is for research use only and not for use in diagnostic or therapeutic procedures.



GNA11 Antibody(N-term) - Background

Guanine nucleotide-binding proteins (G proteins) are involved as modulators or transducers in various transmembrane signaling systems. Acts as an activator of phospholipase C.

GNA11 Antibody(N-term) - References

- Shankaranarayanan, A., et al. J. Biol. Chem. 283(50):34923-34934(2008)
- Gavard, J., et al. J. Biol. Chem. 283(44):29888-29896(2008)
- Luttrell, L.M. Mol. Biotechnol. 39(3):239-264(2008)
- Durchankova, D., et al. Physiol Res 57(2):195-203(2008)
- Hildebrand, M.E., et al. J. Biol. Chem. 282(29):21043-21055(2007)

GNA11 Antibody(N-term) - Protein Information

Name GNA11

Synonyms GA11

Function

Guanine nucleotide-binding proteins (G proteins) are involved as modulators or transducers in various transmembrane signaling systems. Acts as an activator of phospholipase C. Transduces FFAR4 signaling in response to long-chain fatty acids (LCFAs).

Cellular Location

Cell membrane; Lipid-anchor. Cytoplasm.
Note=In testicular cells, expressed exclusively in the cytoplasm

Tissue Location

Expressed in testis..

GNA11 Antibody(N-term) - Protocols

Provided below are standard protocols that you may find useful for product applications.

- [Western Blot](#)
- [Blocking Peptides](#)
- [Dot Blot](#)
- [Immunohistochemistry](#)
- [Immunofluorescence](#)
- [Immunoprecipitation](#)
- [Flow Cytometry](#)
- [Cell Culture](#)

GNA11 Antibody(N-term) - Citations

- [G Protein \$\alpha\$ Subunit 14 Mediates Fibroblast Growth Factor 2-Induced Cellular Responses in Human Endothelial Cells.](#)
- [GNA11 differentially mediates fibroblast growth factor 2- and vascular endothelial growth factor A-induced cellular responses in human fetoplacental endothelial cells.](#)
- [Expression of G-protein subunit \$\alpha\$ -14 is increased in human placentas from preeclamptic pregnancies.](#)