

DIMT1 Antibody (C-term)
Purified Rabbit Polyclonal Antibody (Pab)
Catalog # AP1945b**Specification**

DIMT1 Antibody (C-term) - Product Information

Application	WB,E
Primary Accession	Q9UNQ2
Other Accession	Q9D0D4 , Q95KJ0 , Q2KHT8
Reactivity	Human
Predicted	Bovine, Monkey, Mouse
Host	Rabbit
Clonality	Polyclonal
Isotype	Rabbit IgG
Calculated MW	35236
Antigen Region	268-298

DIMT1 Antibody (C-term) - Additional Information**Gene ID** 27292**Other Names**

Probable dimethyladenosine transferase, DIM1 dimethyladenosine transferase 1 homolog, DIM1 dimethyladenosine transferase 1-like, Probable 18S rRNA (adenine(1779)-N(6)/adenine(1780)-N(6))-dimethyltransferase, Probable 18S rRNA dimethylase, Probable S-adenosylmethionine-6-N', N'-adenosyl(rRNA) dimethyltransferase, DIMT1, DIMT1L

Target/Specificity

This DIMT1 antibody is generated from rabbits immunized with a KLH conjugated synthetic peptide between 268-298 amino acids from the C-terminal region of human DIMT1.

Dilution

WB~~1:1000

E~~Use at an assay dependent concentration.

Format

Purified polyclonal antibody supplied in PBS with 0.09% (W/V) sodium azide. This antibody is prepared by Saturated Ammonium Sulfate (SAS) precipitation followed by dialysis against PBS.

Storage

Maintain refrigerated at 2-8°C for up to 2 weeks. For long term storage store at -20°C in small aliquots to prevent freeze-thaw cycles.

Precautions

DIMT1 Antibody (C-term) is for research use only and not for use in diagnostic or therapeutic procedures.

DIMT1 Antibody (C-term) - Protein Information

Name DIMT1 ([HGNC:30217](#))

Synonyms DIMT1L

Function Specifically dimethylates two adjacent adenosines in the loop of a conserved hairpin near the 3'-end of 18S rRNA in the 40S particle (PubMed:[25851604](#)). Involved in the pre-rRNA processing steps leading to small-subunit rRNA production independently of its RNA-modifying catalytic activity (PubMed:[25851604](#)). Part of the small subunit (SSU) processome, first precursor of the small eukaryotic ribosomal subunit. During the assembly of the SSU processome in the nucleolus, many ribosome biogenesis factors, an RNA chaperone and ribosomal proteins associate with the nascent pre-rRNA and work in concert to generate RNA folding, modifications, rearrangements and cleavage as well as targeted degradation of pre-ribosomal RNA by the RNA exosome (PubMed:[34516797](#)).

Cellular Location

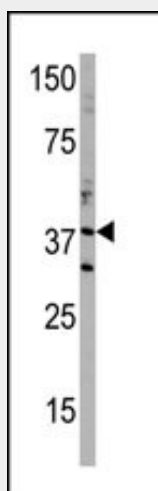
Nucleus, nucleoplasm. Nucleus, nucleolus

DIMT1 Antibody (C-term) - Protocols

Provided below are standard protocols that you may find useful for product applications.

- [Western Blot](#)
- [Blocking Peptides](#)
- [Dot Blot](#)
- [Immunohistochemistry](#)
- [Immunofluorescence](#)
- [Immunoprecipitation](#)
- [Flow Cytometry](#)
- [Cell Culture](#)

DIMT1 Antibody (C-term) - Images



Western blot analysis of anti-DIMT1 Pab (Cat. #AP1945b) in T47D cell line lysate (35ug/lane). DIMT1 (arrow) was detected using the purified Pab.

DIMT1 Antibody (C-term) - Background

DIMT1 specifically dimethylates two adjacent adenosines in the loop of a conserved hairpin near the 3'-end of 18S rRNA in the 40S particle.

DIMT1 Antibody (C-term) - References

Stanchi, F., et al., Yeast 18(1):69-80 (2001).