

SPIB Antibody(C-term)
Affinity Purified Rabbit Polyclonal Antibody (Pab)
Catalog # AP19462b**Specification**

SPIB Antibody(C-term) - Product Information

Application	WB,E
Primary Accession	Q01892
Other Accession	Q5EBA3 , O35906 , NP_003112.2
Reactivity	Human
Predicted	Mouse, Rat
Host	Rabbit
Clonality	Polyclonal
Isotype	Rabbit IgG
Antigen Region	216-245

SPIB Antibody(C-term) - Additional Information**Gene ID** 6689**Other Names**

Transcription factor Spi-B, SPIB

Target/Specificity

This SPIB antibody is generated from rabbits immunized with a KLH conjugated synthetic peptide between 216-245 amino acids from the C-terminal region of human SPIB.

Dilution

WB~~1:1000

E~~Use at an assay dependent concentration.

Format

Purified polyclonal antibody supplied in PBS with 0.09% (W/V) sodium azide. This antibody is purified through a protein A column, followed by peptide affinity purification.

Storage

Maintain refrigerated at 2-8°C for up to 2 weeks. For long term storage store at -20°C in small aliquots to prevent freeze-thaw cycles.

Precautions

SPIB Antibody(C-term) is for research use only and not for use in diagnostic or therapeutic procedures.

SPIB Antibody(C-term) - Protein Information**Name** SPIB**Function** Sequence specific transcriptional activator which binds to the PU-box, a purine-rich DNA

sequence (5'-GAGGAA-3') that can act as a lymphoid-specific enhancer. Promotes development of plasmacytoid dendritic cells (pDCs), also known as type 2 DC precursors (pre-DC2) or natural interferon (IFN)-producing cells. These cells have the capacity to produce large amounts of interferon and block viral replication. May be required for B-cell receptor (BCR) signaling, which is necessary for normal B-cell development and antigenic stimulation.

Cellular Location

[Isoform 1]: Nucleus

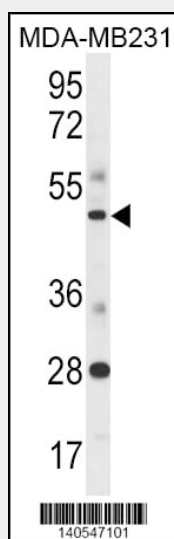
Tissue Location

Expressed in plasmacytoid dendritic cells (pDCs) and B-cells, not expressed in T-cells or granulocytes. May also be enriched in stem cell populations of the liver

SPIB Antibody(C-term) - Protocols

Provided below are standard protocols that you may find useful for product applications.

- [Western Blot](#)
- [Blocking Peptides](#)
- [Dot Blot](#)
- [Immunohistochemistry](#)
- [Immunofluorescence](#)
- [Immunoprecipitation](#)
- [Flow Cytometry](#)
- [Cell Culture](#)

SPIB Antibody(C-term) - Images

SPIB Antibody (C-term) (Cat. #AP19462b) western blot analysis in MDA-MB231 cell line lysates (35ug/lane). This demonstrates the SPIB antibody detected the SPIB protein (arrow).

SPIB Antibody(C-term) - Background

SPI1 (MIM 165170) and SPIB are members of a subfamily of ETS (see ETS1; MIM 164720) transcription factors. ETS proteins share a conserved ETS domain that mediates specific DNA binding. SPIB and SPI1 bind to a purine-rich sequence, the PU box

(5-prime-GAGGAA-3-prime).

SPIB Antibody(C-term) - References

Liu, X., et al. Nat. Genet. 42(8):658-660(2010)
Schmidlin, H., et al. Blood 112(5):1804-1812(2008)
Nagasawa, M., et al. Eur. J. Immunol. 38(9):2389-2400(2008)
Dontje, W., et al. Blood 107(6):2446-2452(2006)
Geng, C.D., et al. J. Biol. Chem. 280(52):43264-43271(2005)