

TFEC Antibody(Center)
Affinity Purified Rabbit Polyclonal Antibody (Pab)
Catalog # AP19475c**Specification**

TFEC Antibody(Center) - Product Information

Application	WB,E
Primary Accession	O14948
Other Accession	Q63302 , Q9WTW4 , Q5XFO6 , NP_001018068.1
Reactivity	Human
Predicted	Chicken, Mouse, Rat
Host	Rabbit
Clonality	Polyclonal
Isotype	Rabbit IgG
Calculated MW	38788
Antigen Region	179-205

TFEC Antibody(Center) - Additional Information**Gene ID** 22797**Other Names**

Transcription factor EC, TFE-C, Class E basic helix-loop-helix protein 34, bHLHe34, Transcription factor EC-like, hTFEC-L, TFEC, BHLHE34, TC FEC, TFECL

Target/Specificity

This TFEC antibody is generated from rabbits immunized with a KLH conjugated synthetic peptide between 179-205 amino acids from the Central region of human TFEC.

Dilution

WB~~1:1000

E~~Use at an assay dependent concentration.

Format

Purified polyclonal antibody supplied in PBS with 0.09% (W/V) sodium azide. This antibody is purified through a protein A column, followed by peptide affinity purification.

Storage

Maintain refrigerated at 2-8°C for up to 2 weeks. For long term storage store at -20°C in small aliquots to prevent freeze-thaw cycles.

Precautions

TFEC Antibody(Center) is for research use only and not for use in diagnostic or therapeutic procedures.

TFEC Antibody(Center) - Protein Information**Name** TFEC

Synonyms BHLHE34, TCFEC, TFECL

Function Transcriptional regulator that acts as a repressor or an activator. Acts as a transcriptional repressor on minimal promoter containing element F (that includes an E-box sequence). Binds to element F in an E-box sequence-specific manner. Acts as a transcriptional transactivator on the proximal promoter region of the tartrate-resistant acid phosphatase (TRAP) E-box containing promoter (By similarity). Collaborates with MITF in target gene activation (By similarity). Acts as a transcriptional repressor on minimal promoter containing mu E3 enhancer sequence (By similarity). Binds to mu E3 DNA sequence of the immunoglobulin heavy-chain gene enhancer (By similarity). Binds DNA in a homo- or heterodimeric form.

Cellular Location

Nucleus {ECO:0000255|PROSITE-ProRule:PRU00981, ECO:0000269|PubMed:11467950}

Tissue Location

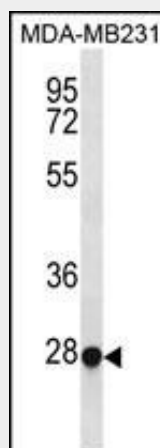
Expressed moderately in spleen, kidney, bone marrow, small intestine and leukocytes. Expressed weakly in testis, trachea and colon.

TFEC Antibody(Center) - Protocols

Provided below are standard protocols that you may find useful for product applications.

- [Western Blot](#)
- [Blocking Peptides](#)
- [Dot Blot](#)
- [Immunohistochemistry](#)
- [Immunofluorescence](#)
- [Immunoprecipitation](#)
- [Flow Cytometry](#)
- [Cell Culture](#)

TFEC Antibody(Center) - Images



TFEC Antibody (Center) (Cat. #AP19475c) western blot analysis in MDA-MB231 cell line lysates (35ug/lane). This demonstrates the TFEC antibody detected the TFEC protein (arrow).

TFEC Antibody(Center) - Background

Transcriptional regulator that acts as a repressor or an activator. Acts as a transcriptional repressor on minimal promoter containing element F (that includes an E-box sequence). Binds to element F in

an E-box sequence-specific manner. Acts as a transcriptional transactivator on the proximal promoter region of the tartrate-resistant acid phosphatase (TRAP) E-box containing promoter (By similarity). Collaborates with MITF in target gene activation (By similarity). Acts as a transcriptional repressor on minimal promoter containing mu E3 enhancer sequence (By similarity). Binds to mu E3 DNA sequence of the immunoglobulin heavy-chain gene enhancer (By similarity). Binds DNA in a homo-or heterodimeric form.

TFEC Antibody(Center) - References

Mansky, K.C., et al. J. Leukoc. Biol. 71(2):304-310(2002)
Chung, M.C., et al. Biochemistry 40(30):8887-8897(2001)
Steingrimsson, E., et al. Development 125(23):4607-4616(1998)
Yasumoto, K., et al. Biochim. Biophys. Acta 1353(1):23-31(1997)
Zhao, G.Q., et al. Mol. Cell. Biol. 13(8):4505-4512(1993)