

UBR7 Antibody(N-term)
Affinity Purified Rabbit Polyclonal Antibody (Pab)
Catalog # AP19480a**Specification**

UBR7 Antibody(N-term) - Product Information

Application	WB,E
Primary Accession	Q8N806
Other Accession	NP_001093887.1
Reactivity	Human
Host	Rabbit
Clonality	Polyclonal
Isotype	Rabbit IgG
Calculated MW	47999
Antigen Region	100-128

UBR7 Antibody(N-term) - Additional Information**Gene ID** 55148**Other Names**

Putative E3 ubiquitin-protein ligase UBR7, 632-, N-recognin-7, UBR7, C14orf130

Target/Specificity

This UBR7 antibody is generated from rabbits immunized with a KLH conjugated synthetic peptide between 100-128 amino acids from the N-terminal region of human UBR7.

Dilution

WB~~1:1000

E~~Use at an assay dependent concentration.

Format

Purified polyclonal antibody supplied in PBS with 0.09% (W/V) sodium azide. This antibody is purified through a protein A column, followed by peptide affinity purification.

Storage

Maintain refrigerated at 2-8°C for up to 2 weeks. For long term storage store at -20°C in small aliquots to prevent freeze-thaw cycles.

Precautions

UBR7 Antibody(N-term) is for research use only and not for use in diagnostic or therapeutic procedures.

UBR7 Antibody(N-term) - Protein Information**Name** UBR7**Synonyms** C14orf130

Function E3 ubiquitin-protein ligase which is a component of the N-end rule pathway. Recognizes and binds to proteins bearing specific N- terminal residues that are destabilizing according to the N-end rule, leading to their ubiquitination and subsequent degradation.

Tissue Location

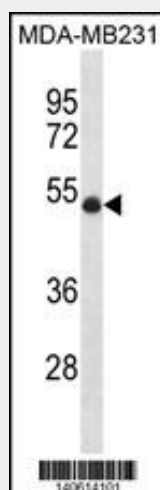
Expressed in sperm (at protein level).

UBR7 Antibody(N-term) - Protocols

Provided below are standard protocols that you may find useful for product applications.

- [Western Blot](#)
- [Blocking Peptides](#)
- [Dot Blot](#)
- [Immunohistochemistry](#)
- [Immunofluorescence](#)
- [Immunoprecipitation](#)
- [Flow Cytometry](#)
- [Cell Culture](#)

UBR7 Antibody(N-term) - Images



UBR7 Antibody (N-term) (Cat. #AP19480a) western blot analysis in MDA-MB231 cell line lysates (35ug/lane). This demonstrates the UBR7 antibody detected the UBR7 protein (arrow).

UBR7 Antibody(N-term) - Background

E3 ubiquitin-protein ligase which is a component of the N-end rule pathway. Recognizes and binds to proteins bearing specific amino-terminal residues that are destabilizing according to the N-end rule, leading to their ubiquitination and subsequent degradation (By similarity).

UBR7 Antibody(N-term) - References

Lee, M.J., et al. Proc. Natl. Acad. Sci. U.S.A. 105(1):100-105(2008)
Lim, J., et al. Cell 125(4):801-814(2006)