

CSF2RA Antibody(C-term)
Affinity Purified Rabbit Polyclonal Antibody (Pab)
Catalog # AP19497b**Specification**

CSF2RA Antibody(C-term) - Product Information

Application	WB,E
Primary Accession	P15509
Other Accession	NP_006131.2
Reactivity	Human
Host	Rabbit
Clonality	Polyclonal
Isotype	Rabbit IgG
Calculated MW	46207
Antigen Region	366-394

CSF2RA Antibody(C-term) - Additional Information**Gene ID** 1438**Other Names**

Granulocyte-macrophage colony-stimulating factor receptor subunit alpha, GM-CSF-R-alpha, GMCSFR-alpha, GMR-alpha, CDw116, CD116, CSF2RA, CSF2R, CSF2RY

Target/Specificity

This CSF2RA antibody is generated from rabbits immunized with a KLH conjugated synthetic peptide between 366-394 amino acids from the C-terminal region of human CSF2RA.

Dilution

WB~~1:1000

E~~Use at an assay dependent concentration.

Format

Purified polyclonal antibody supplied in PBS with 0.09% (W/V) sodium azide. This antibody is purified through a protein A column, followed by peptide affinity purification.

Storage

Maintain refrigerated at 2-8°C for up to 2 weeks. For long term storage store at -20°C in small aliquots to prevent freeze-thaw cycles.

Precautions

CSF2RA Antibody(C-term) is for research use only and not for use in diagnostic or therapeutic procedures.

CSF2RA Antibody(C-term) - Protein Information**Name** CSF2RA

Synonyms CSF2R, CSF2RY

Function Low affinity receptor for granulocyte-macrophage colony- stimulating factor. Transduces a signal that results in the proliferation, differentiation, and functional activation of hematopoietic cells.

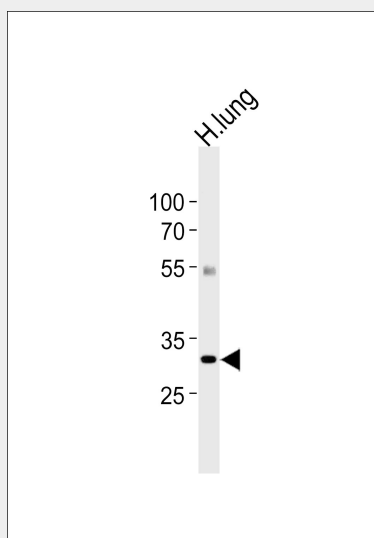
Cellular Location

Cell membrane; Single-pass type I membrane protein [Isoform 4]: Secreted.

CSF2RA Antibody(C-term) - Protocols

Provided below are standard protocols that you may find useful for product applications.

- [Western Blot](#)
- [Blocking Peptides](#)
- [Dot Blot](#)
- [Immunohistochemistry](#)
- [Immunofluorescence](#)
- [Immunoprecipitation](#)
- [Flow Cytometry](#)
- [Cell Culture](#)

CSF2RA Antibody(C-term) - Images

Western blot analysis of lysate from human lung tissue lysate, using CSF2RA Antibody (C-term)(Cat. #AP19497b). AP19497b was diluted at 1:1000 at each lane. A goat anti-rabbit IgG H&L(HRP) at 1:5000 dilution was used as the secondary antibody. Lysate at 35ug per lane.

CSF2RA Antibody(C-term) - Background

The protein encoded by this gene is the alpha subunit of the heterodimeric receptor for colony stimulating factor 2, a cytokine which controls the production, differentiation, and function of granulocytes and macrophages. The encoded protein is a member of the cytokine family of receptors. This gene is found in the pseudoautosomal region (PAR) of the X and Y chromosomes. Multiple transcript variants encoding different isoforms have been

found for this gene, with some of the isoforms being membrane-bound and others being soluble.

CSF2RA Antibody(C-term) - References

Mirza, S., et al. Biochem. J. 426(3):307-317(2010)
Sun, S., et al. Brain Res. 1268, 13-16 (2009) :
Suzuki, T., et al. J. Exp. Med. 205(12):2703-2710(2008)
Martinez-Moczygemba, M., et al. J. Exp. Med. 205(12):2711-2716(2008)
Hansen, G., et al. Cell 134(3):496-507(2008)