

**RCL1 Antibody (N-term)**  
**Purified Rabbit Polyclonal Antibody (Pab)**  
**Catalog # AP1949a****Specification**

---

**RCL1 Antibody (N-term) - Product Information**

Application	WB,E
Primary Accession	<a href="#">Q9Y2P8</a>
Other Accession	<a href="#">Q2KHX8</a>
Reactivity	Human
Predicted	Bovine
Host	Rabbit
Clonality	Polyclonal
Isotype	Rabbit IgG
Calculated MW	40843
Antigen Region	14-43

**RCL1 Antibody (N-term) - Additional Information****Gene ID** 10171**Other Names**

RNA 3'-terminal phosphate cyclase-like protein, RCL1, RNAC, RPC2, RPCL1, RTC2

**Target/Specificity**

This RCL1 antibody is generated from rabbits immunized with a KLH conjugated synthetic peptide between 14-43 amino acids from the N-terminal region of human RCL1.

**Dilution**

WB~~1:1000

**Format**

Purified polyclonal antibody supplied in PBS with 0.09% (W/V) sodium azide. This antibody is prepared by Saturated Ammonium Sulfate (SAS) precipitation followed by dialysis against PBS.

**Storage**

Maintain refrigerated at 2-8°C for up to 2 weeks. For long term storage store at -20°C in small aliquots to prevent freeze-thaw cycles.

**Precautions**

RCL1 Antibody (N-term) is for research use only and not for use in diagnostic or therapeutic procedures.

**RCL1 Antibody (N-term) - Protein Information****Name** RCL1 ([HGNC:17687](#))**Synonyms** RNAC, RPC2, RPCL1, RTC2

**Function** Part of the small subunit (SSU) processome, first precursor of the small eukaryotic ribosomal subunit. During the assembly of the SSU processome in the nucleolus, many ribosome biogenesis factors, an RNA chaperone and ribosomal proteins associate with the nascent pre- rRNA and work in concert to generate RNA folding, modifications, rearrangements and cleavage as well as targeted degradation of pre- ribosomal RNA by the RNA exosome (PubMed:[34516797](#)). Does not have cyclase activity (By similarity).

**Cellular Location**

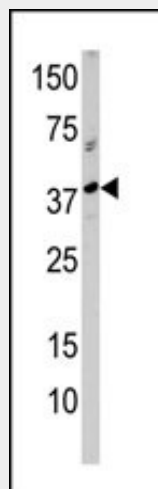
Nucleus, nucleolus.

**RCL1 Antibody (N-term) - Protocols**

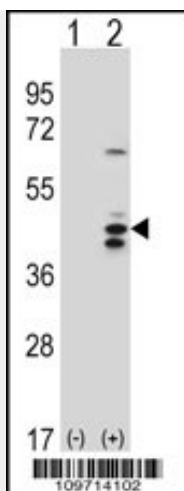
Provided below are standard protocols that you may find useful for product applications.

- [Western Blot](#)
- [Blocking Peptides](#)
- [Dot Blot](#)
- [Immunohistochemistry](#)
- [Immunofluorescence](#)
- [Immunoprecipitation](#)
- [Flow Cytometry](#)
- [Cell Culture](#)

**RCL1 Antibody (N-term) - Images**



Western blot analysis of anti-RCL1 Pab (Cat. #AP1949a) in A375 cell line lysate (35ug/lane). RCL1 (arrow) was detected using the purified Pab.



Western blot analysis of RCL1 (arrow) using rabbit polyclonal RCL1 Antibody (Cat. #AP1949a). 293 cell lysates (2 ug/lane) either nontransfected (Lane 1) or transiently transfected (Lane 2) with the RCL1 gene.

#### **RCL1 Antibody (N-term) - Background**

RCL1, which does not have cyclase activity, plays a role in 40S- ribosomal-subunit biogenesis in the early pre-rRNA processing steps at sites A0, A1 and A2 that are required for proper maturation of the 18S RNA.

#### **RCL1 Antibody (N-term) - References**

Billy, E., et al., EMBO J. 19(9):2115-2126 (2000).  
Genschik P., et al., EMBO J. 16(10):2955-67 (1997).