

CSF3 Antibody(C-term)
Affinity Purified Rabbit Polyclonal Antibody (Pab)
Catalog # AP19503b

Specification

CSF3 Antibody(C-term) - Product Information

Application	WB,E
Primary Accession	P09919
Other Accession	NP_000750.1
Reactivity	Human
Host	Rabbit
Clonality	Polyclonal
Isotype	Rabbit IgG
Calculated MW	22293
Antigen Region	180-207

CSF3 Antibody(C-term) - Additional Information

Gene ID 1440

Other Names

Granulocyte colony-stimulating factor, G-CSF, Pluripoietin, Filgrastim, Lenograstim, CSF3, C17orf33, GCSF

Target/Specificity

This CSF3 antibody is generated from rabbits immunized with a KLH conjugated synthetic peptide between 180-207 amino acids from the C-terminal region of human CSF3.

Dilution

WB~~1:1000

E~~Use at an assay dependent concentration.

Format

Purified polyclonal antibody supplied in PBS with 0.09% (W/V) sodium azide. This antibody is purified through a protein A column, followed by peptide affinity purification.

Storage

Maintain refrigerated at 2-8°C for up to 2 weeks. For long term storage store at -20°C in small aliquots to prevent freeze-thaw cycles.

Precautions

CSF3 Antibody(C-term) is for research use only and not for use in diagnostic or therapeutic procedures.

CSF3 Antibody(C-term) - Protein Information

Name CSF3

Synonyms C17orf33, GCSF

Function Granulocyte/macrophage colony-stimulating factors are cytokines that act in hematopoiesis by controlling the production, differentiation, and function of 2 related white cell populations of the blood, the granulocytes and the monocytes-macrophages. This CSF induces granulocytes.

Cellular Location

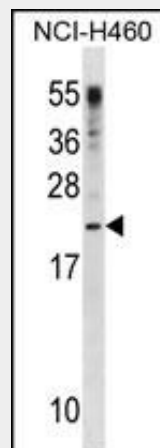
Secreted.

CSF3 Antibody(C-term) - Protocols

Provided below are standard protocols that you may find useful for product applications.

- [Western Blot](#)
- [Blocking Peptides](#)
- [Dot Blot](#)
- [Immunohistochemistry](#)
- [Immunofluorescence](#)
- [Immunoprecipitation](#)
- [Flow Cytometry](#)
- [Cell Culture](#)

CSF3 Antibody(C-term) - Images



CSF3 Antibody (C-term) (Cat. #AP19503b) western blot analysis in NCI-H460 cell line lysates (35ug/lane). This demonstrates the CSF3 antibody detected the CSF3 protein (arrow).

CSF3 Antibody(C-term) - Background

The protein encoded by this gene is a cytokine that controls the production, differentiation, and function of granulocytes. The active protein is found extracellularly. Alternatively spliced transcript variants have been described for this gene.

CSF3 Antibody(C-term) - References

Frauenknecht, K., et al. J. Neuroimmunol. 227 (1-2), 1-9 (2010) :
Romero, R., et al. Am. J. Obstet. Gynecol. 203 (4), 361 (2010) :

Bailey, S.D., et al. Diabetes Care 33(10):2250-2253(2010)
Takagi, Y., et al. Thorac Cardiovasc Surg 58(5):304-306(2010)
Kato, M., et al. Int. Arch. Allergy Immunol. 152 SUPPL 1, 62-66 (2010) :