

EIF4B Antibody (Center)
Purified Rabbit Polyclonal Antibody (Pab)
Catalog # AP1950c**Specification**

EIF4B Antibody (Center) - Product Information

Application	IHC-P, WB,E
Primary Accession	P23588
Other Accession	Q8BGD9 , Q8WYK5
Reactivity	Human
Predicted	Mouse
Host	Rabbit
Clonality	Polyclonal
Isotype	Rabbit IgG
Calculated MW	69151
Antigen Region	353-382

EIF4B Antibody (Center) - Additional Information**Gene ID** 1975**Other Names**

Eukaryotic translation initiation factor 4B, eIF-4B, EIF4B

Target/Specificity

This EIF4B antibody is generated from rabbits immunized with a KLH conjugated synthetic peptide between 353-382 amino acids from the Central region of human EIF4B.

Dilution

IHC-P~~1:50~100

WB~~1:1000

E~~Use at an assay dependent concentration.

Format

Purified polyclonal antibody supplied in PBS with 0.09% (W/V) sodium azide. This antibody is prepared by Saturated Ammonium Sulfate (SAS) precipitation followed by dialysis against PBS.

Storage

Maintain refrigerated at 2-8°C for up to 2 weeks. For long term storage store at -20°C in small aliquots to prevent freeze-thaw cycles.

Precautions

EIF4B Antibody (Center) is for research use only and not for use in diagnostic or therapeutic procedures.

EIF4B Antibody (Center) - Protein Information**Name** EIF4B

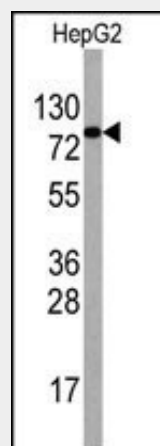
Function Required for the binding of mRNA to ribosomes. Functions in close association with EIF4-F and EIF4-A. Binds near the 5'-terminal cap of mRNA in presence of EIF-4F and ATP. Promotes the ATPase activity and the ATP-dependent RNA unwinding activity of both EIF4-A and EIF4-F.

EIF4B Antibody (Center) - Protocols

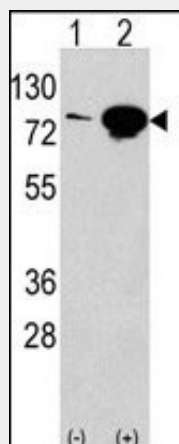
Provided below are standard protocols that you may find useful for product applications.

- [Western Blot](#)
- [Blocking Peptides](#)
- [Dot Blot](#)
- [Immunohistochemistry](#)
- [Immunofluorescence](#)
- [Immunoprecipitation](#)
- [Flow Cytometry](#)
- [Cell Culture](#)

EIF4B Antibody (Center) - Images

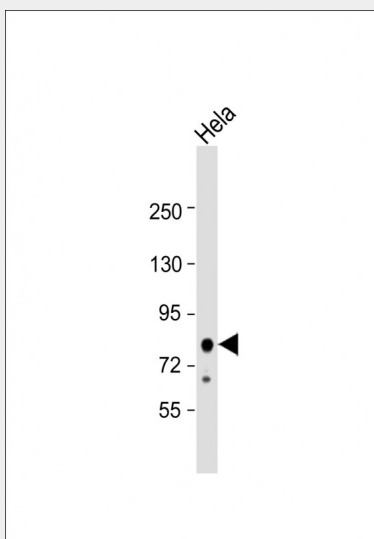


Western blot analysis of anti-EIF4B Antibody (Center) Pab (Cat.#AP1950c) in HepG2 cell line lysates (35ug/lane). EIF4B (arrow) was detected using the purified Pab.

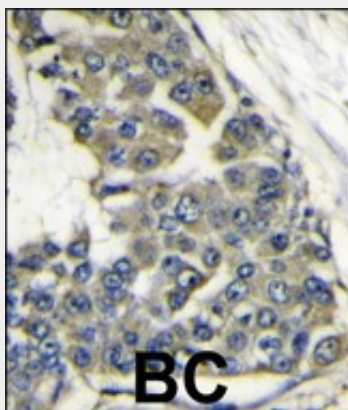


Western blot analysis of anti-EIF4B Antibody (Center) Pab (Cat.#AP1950c) in 293 cell line lysates transiently transfected with the EIF4B gene (2ug/lane). EIF4B (arrow) was detected using the

purified Pab.



Anti-EIF4B Antibody (Center) at 1:1000 dilution + HeLa whole cell lysate Lysates/proteins at 20 µg per lane. Secondary Goat Anti-Rabbit IgG, (H+L), Peroxidase conjugated at 1/10000 dilution. Predicted band size : 69 kDa Blocking/Dilution buffer: 5% NFDM/TBST.



Formalin-fixed and paraffin-embedded human breast carcinoma reacted with EIF4B antibody (Center)(Cat.#AP1950c), which was peroxidase-conjugated to the secondary antibody, followed by DAB staining. This data demonstrates the use of this antibody for immunohistochemistry; clinical relevance has not been evaluated.

EIF4B Antibody (Center) - Background

EIF4B is required for the binding of mRNA to ribosomes. It functions in close association with EIF4-F and EIF4-A by binding near the 5'- terminal cap of mRNA in presence of EIF-4F and ATP. This gene also promotes the ATPase activity and the ATP-dependent RNA unwinding activity of both EIF4-A and EIF4-F