

EIF4B Antibody (S422)
Affinity Purified Rabbit Polyclonal Antibody (Pab)
Catalog # AP1950d**Specification**

EIF4B Antibody (S422) - Product Information

Application	IHC-P, WB,E
Primary Accession	P23588
Other Accession	Q8WYK5
Reactivity	Human
Host	Rabbit
Clonality	Polyclonal
Isotype	Rabbit IgG
Calculated MW	69151
Antigen Region	400-429

EIF4B Antibody (S422) - Additional Information**Gene ID** 1975**Other Names**

Eukaryotic translation initiation factor 4B, eIF-4B, EIF4B

Target/Specificity

This EIF4B antibody is generated from rabbits immunized with a KLH conjugated synthetic peptide between 400-429 amino acids from human EIF4B.

Dilution

IHC-P~~1:10~50

WB~~1:1000

E~~Use at an assay dependent concentration.

Format

Purified polyclonal antibody supplied in PBS with 0.09% (W/V) sodium azide. This antibody is purified through a protein A column, followed by peptide affinity purification.

Storage

Maintain refrigerated at 2-8°C for up to 2 weeks. For long term storage store at -20°C in small aliquots to prevent freeze-thaw cycles.

Precautions

EIF4B Antibody (S422) is for research use only and not for use in diagnostic or therapeutic procedures.

EIF4B Antibody (S422) - Protein Information**Name** EIF4B

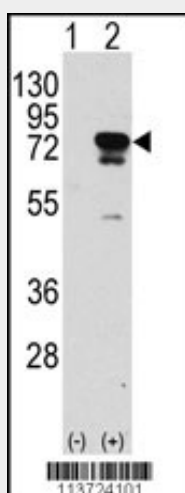
Function Required for the binding of mRNA to ribosomes. Functions in close association with EIF4-F and EIF4-A. Binds near the 5'-terminal cap of mRNA in presence of EIF-4F and ATP. Promotes the ATPase activity and the ATP-dependent RNA unwinding activity of both EIF4-A and EIF4-F.

EIF4B Antibody (S422) - Protocols

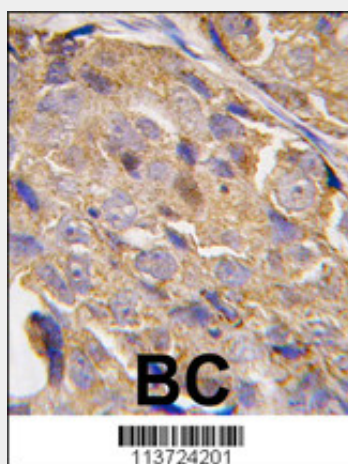
Provided below are standard protocols that you may find useful for product applications.

- [Western Blot](#)
- [Blocking Peptides](#)
- [Dot Blot](#)
- [Immunohistochemistry](#)
- [Immunofluorescence](#)
- [Immunoprecipitation](#)
- [Flow Cytometry](#)
- [Cell Culture](#)

EIF4B Antibody (S422) - Images



Western blot analysis of EIF4B (arrow) using rabbit polyclonal EIF4B Antibody (S422) (RB13724). 293 cell lysates (2 ug/lane) either nontransfected (Lane 1) or transiently transfected with the EIF4B gene (Lane 2) (Origene Technologies).



Formalin-fixed and paraffin-embedded human breast carcinoma tissue reacted with EIF4B-S422, which was peroxidase-conjugated to the secondary antibody, followed by DAB staining. This data demonstrates the use of this antibody for immunohistochemistry; clinical relevance has not been evaluated.

EIF4B Antibody (S422) - Background

EIF4B is required for the binding of mRNA to ribosomes. It functions in close association with EIF4-F and EIF4-A by binding near the 5'- terminal cap of mRNA in presence of EIF-4F and ATP. It also promotes the ATPase activity and the ATP-dependent RNA unwinding activity of both EIF4-A and EIF4-F

EIF4B Antibody (S422) - References

Doepker, R.C., et al., J. Virol. 78(9):4684-4699 (2004).
Fleming, K., et al., Biochemistry 42(30):8966-8975 (2003).
Milburn, S.C., et al., EMBO J. 9(9):2783-2790 (1990).