

GTF2IRD2B Antibody(C-term)
Affinity Purified Rabbit Polyclonal Antibody (Pab)
Catalog # AP19546b**Specification**

GTF2IRD2B Antibody(C-term) - Product Information

Application	WB,E
Primary Accession	Q6EKJ0
Other Accession	Q86UP8 , NP_001003795.1
Reactivity	Human
Host	Rabbit
Clonality	Polyclonal
Isotype	Rabbit IgG
Calculated MW	107233
Antigen Region	467-494

GTF2IRD2B Antibody(C-term) - Additional Information**Gene ID** 389524**Other Names**

General transcription factor II-I repeat domain-containing protein 2B, GTF2I repeat domain-containing protein 2B, Transcription factor GTF2IRD2-beta, GTF2IRD2B

Target/Specificity

This GTF2IRD2B antibody is generated from rabbits immunized with a KLH conjugated synthetic peptide between 467-494 amino acids from the C-terminal region of human GTF2IRD2B.

Dilution

WB~~1:1000

E~~Use at an assay dependent concentration.

Format

Purified polyclonal antibody supplied in PBS with 0.09% (W/V) sodium azide. This antibody is purified through a protein A column, followed by peptide affinity purification.

Storage

Maintain refrigerated at 2-8°C for up to 2 weeks. For long term storage store at -20°C in small aliquots to prevent freeze-thaw cycles.

Precautions

GTF2IRD2B Antibody(C-term) is for research use only and not for use in diagnostic or therapeutic procedures.

GTF2IRD2B Antibody(C-term) - Protein Information**Name** GTF2IRD2B

Cellular Location

Nucleus.

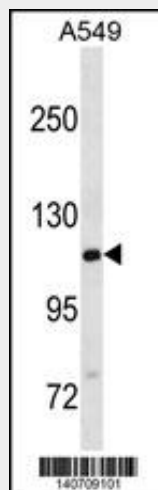
Tissue Location

Ubiquitous.

GTF2IRD2B Antibody(C-term) - Protocols

Provided below are standard protocols that you may find useful for product applications.

- [Western Blot](#)
- [Blocking Peptides](#)
- [Dot Blot](#)
- [Immunohistochemistry](#)
- [Immunofluorescence](#)
- [Immunoprecipitation](#)
- [Flow Cytometry](#)
- [Cell Culture](#)

GTF2IRD2B Antibody(C-term) - Images

GTF2IRD2B Antibody (C-term) (Cat. #AP19546b) western blot analysis in A549 cell line lysates (35ug/lane). This demonstrates the GTF2IRD2B antibody detected the GTF2IRD2B protein (arrow).

GTF2IRD2B Antibody(C-term) - Background

This gene encodes a glycosylated phosphoprotein with a leucine zipper motif, two helix-loop-helix motifs (1 repeats) that are similar to domains found in the TFII-I family of transcription factors, one CHARLIE8 transposable element-like sequence, and a BED zinc finger. This gene lies within a region that is deleted in Williams-Beuren syndrome. Alternatively spliced variants which encode different protein isoforms have been described; however, not all variants have been fully characterized.

GTF2IRD2B Antibody(C-term) - References

Hinsley, T.A., et al. Protein Sci. 13(10):2588-2599(2004)

Tipney, H.J., et al. Eur. J. Hum. Genet. 12(7):551-560(2004)