

**PRR14 Antibody(C-term)**  
**Affinity Purified Rabbit Polyclonal Antibody (Pab)**  
**Catalog # AP19549b**

**Specification**

---

**PRR14 Antibody(C-term) - Product Information**

Application	WB,E
Primary Accession	<a href="#">O9BWN1</a>
Other Accession	<a href="#">O7TPN9</a> , <a href="#">NP_076936.1</a>
Reactivity	Human
Predicted	Mouse
Host	Rabbit
Clonality	Polyclonal
Isotype	Rabbit IgG
Calculated MW	64328
Antigen Region	422-450

**PRR14 Antibody(C-term) - Additional Information**

**Gene ID** 78994

**Other Names**

Proline-rich protein 14, PRR14

**Target/Specificity**

This PRR14 antibody is generated from rabbits immunized with a KLH conjugated synthetic peptide between 422-450 amino acids from the C-terminal region of human PRR14.

**Dilution**

WB~~1:1000

**Format**

Purified polyclonal antibody supplied in PBS with 0.09% (W/V) sodium azide. This antibody is purified through a protein A column, followed by peptide affinity purification.

**Storage**

Maintain refrigerated at 2-8°C for up to 2 weeks. For long term storage store at -20°C in small aliquots to prevent freeze-thaw cycles.

**Precautions**

PRR14 Antibody(C-term) is for research use only and not for use in diagnostic or therapeutic procedures.

**PRR14 Antibody(C-term) - Protein Information**

**Name** PRR14

**Function** Functions in tethering peripheral heterochromatin to the nuclear lamina during

interphase, possibly through the interaction with heterochromatin protein CBX5/HP1 alpha (PubMed:[24209742](#)). Might play a role in reattaching heterochromatin to the nuclear lamina at mitotic exit (PubMed:[24209742](#)). Promotes myoblast differentiation during skeletal myogenesis, possibly by stimulating transcription factor MyoD activity via binding to CBX5/HP1 alpha (PubMed:[25906157](#)). Involved in the positive regulation of the PI3K-Akt-mTOR signaling pathway and in promoting cell proliferation, possibly via binding to GRB2 (PubMed:[27041574](#)).

#### Cellular Location

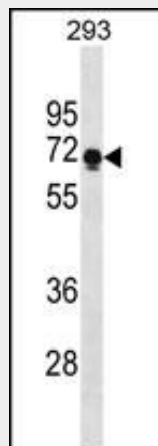
Chromosome. Nucleus. Nucleus lamina. Nucleus, nucleoplasm. Note=During interphase, associated with peripheral heterochromatin at the nuclear lamina. Released from the nuclear lamina in mitotic prophase and remains highly dispersed in metaphase. Associates with chromatin at the onset of anaphase and relocates to the nuclear lamina in telophase

#### PRR14 Antibody(C-term) - Protocols

Provided below are standard protocols that you may find useful for product applications.

- [Western Blot](#)
- [Blocking Peptides](#)
- [Dot Blot](#)
- [Immunohistochemistry](#)
- [Immunofluorescence](#)
- [Immunoprecipitation](#)
- [Flow Cytometry](#)
- [Cell Culture](#)

#### PRR14 Antibody(C-term) - Images



PRR14 Antibody (C-term) (Cat. #AP19549b) western blot analysis in 293 cell line lysates (35ug/lane). This demonstrates the PRR14 antibody detected the PRR14 protein (arrow).

#### PRR14 Antibody(C-term) - References

Han, J.W., et al. Nat. Genet. 41(11):1234-1237(2009)