

**CLIC6 Antibody(C-term)**  
**Affinity Purified Rabbit Polyclonal Antibody (Pab)**  
**Catalog # AP19553b****Specification**

---

**CLIC6 Antibody(C-term) - Product Information**

Application	WB,E
Primary Accession	<a href="#">O96NY7</a>
Other Accession	<a href="#">O9N2G5</a> , <a href="#">NP_444507.1</a>
Reactivity	Human
Predicted	Rabbit
Host	Rabbit
Clonality	Polyclonal
Isotype	Rabbit IgG
Calculated MW	73012
Antigen Region	676-704

**CLIC6 Antibody(C-term) - Additional Information****Gene ID** 54102**Other Names**

Chloride intracellular channel protein 6, Parchorin, CLIC6, CLIC1L

**Target/Specificity**

This CLIC6 antibody is generated from rabbits immunized with a KLH conjugated synthetic peptide between 676-704 amino acids from the C-terminal region of human CLIC6.

**Dilution**

WB~~1:1000

E~~Use at an assay dependent concentration.

**Format**

Purified polyclonal antibody supplied in PBS with 0.09% (W/V) sodium azide. This antibody is purified through a protein A column, followed by peptide affinity purification.

**Storage**

Maintain refrigerated at 2-8°C for up to 2 weeks. For long term storage store at -20°C in small aliquots to prevent freeze-thaw cycles.

**Precautions**

CLIC6 Antibody(C-term) is for research use only and not for use in diagnostic or therapeutic procedures.

**CLIC6 Antibody(C-term) - Protein Information****Name** CLIC6 {ECO:0000303|PubMed:37838179, ECO:0000312|HGNC:HGNC:2065}

**Function** In the soluble state, catalyzes glutaredoxin-like thiol disulfide exchange reactions with reduced glutathione as electron donor (By similarity). Can insert into membranes and form voltage-dependent chloride-selective channels. The channel opens upon membrane depolarization at positive voltages and closes at negative membrane voltages (PubMed:[37838179](#)). May play a critical role in water-secreting cells, possibly through the regulation of chloride ion transport (By similarity).

#### Cellular Location

Cytoplasm. Cell membrane; Single-pass membrane protein Note=Predominantly cytoplasmic. Upon chloride ion efflux from the cell, it is translocated to the plasma membrane (By similarity)

#### Tissue Location

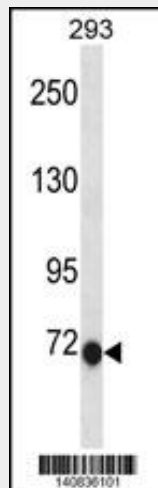
Expressed in brain, placenta, pancreas, liver, lung, heart, kidney, liver, spleen, soleus muscle, and brown fat

### CLIC6 Antibody(C-term) - Protocols

Provided below are standard protocols that you may find useful for product applications.

- [Western Blot](#)
- [Blocking Peptides](#)
- [Dot Blot](#)
- [Immunohistochemistry](#)
- [Immunofluorescence](#)
- [Immunoprecipitation](#)
- [Flow Cytometry](#)
- [Cell Culture](#)

### CLIC6 Antibody(C-term) - Images



CLIC6 Antibody (C-term) (Cat. #AP19553b) western blot analysis in 293 cell line lysates (35ug/lane). This demonstrates the CLIC6 antibody detected the CLIC6 protein (arrow).

### CLIC6 Antibody(C-term) - Background

This gene encodes a member of the chloride intracellular channel family of proteins. The gene is part of a large triplicated region found on chromosomes 1, 6, and 21. An alternatively spliced transcript variant has been described, but its biological validity

has not been determined.

#### **CLIC6 Antibody(C-term) - References**

Wheeler, H.E., et al. PLoS Genet. 5 (10), E1000685 (2009) :  
Friedli, M., et al. Gene 320, 31-40 (2003) :  
Strippoli, P., et al. Mamm. Genome 13(8):456-462(2002)  
Scanlan, M.J., et al. Cancer Immun. 1, 4 (2001) :