

GSTT2 Antibody(Center)
Affinity Purified Rabbit Polyclonal Antibody (Pab)
Catalog # AP19567c**Specification**

GSTT2 Antibody(Center) - Product Information

Application	WB, IHC-P,E
Primary Accession	P0CG29
Other Accession	P0CG30 , NP_000845.1
Reactivity	Human
Host	Rabbit
Clonality	Polyclonal
Isotype	Rabbit IgG
Antigen Region	113-141

GSTT2 Antibody(Center) - Additional Information**Gene ID** 2953**Other Names**

Glutathione S-transferase theta-2, GST class-theta-2, GSTT2

Target/Specificity

This GSTT2 antibody is generated from rabbits immunized with a KLH conjugated synthetic peptide between 113-141 amino acids from the Central region of human GSTT2.

Dilution

WB~~1:1000

IHC-P~~1:100

E~~Use at an assay dependent concentration.

Format

Purified polyclonal antibody supplied in PBS with 0.09% (W/V) sodium azide. This antibody is purified through a protein A column, followed by peptide affinity purification.

Storage

Maintain refrigerated at 2-8°C for up to 2 weeks. For long term storage store at -20°C in small aliquots to prevent freeze-thaw cycles.

Precautions

GSTT2 Antibody(Center) is for research use only and not for use in diagnostic or therapeutic procedures.

GSTT2 Antibody(Center) - Protein Information**Name** GSTT2**Function** Conjugation of reduced glutathione to a wide number of exogenous and endogenous

hydrophobic electrophiles (PubMed:[1417752](#)). Has a sulfatase activity (PubMed:[1417752](#)).

Cellular Location

Cytoplasm, cytosol. Nucleus {ECO:0000250|UniProtKB:P30713}

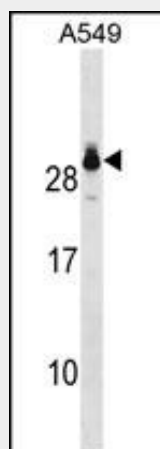
Tissue Location

Expressed at low levels in liver. In lung, expressed at low levels in ciliated bronchiolar cells, alveolar macrophages and alveolar type II cells.

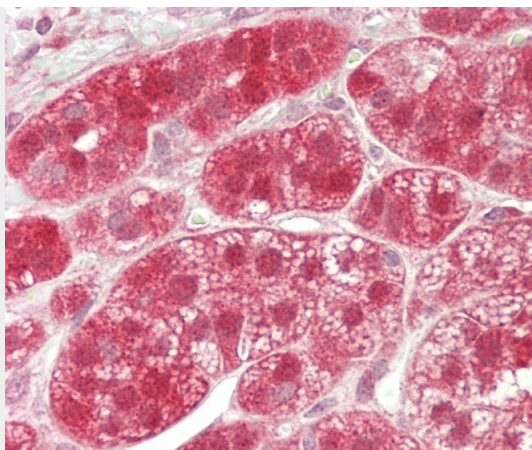
GSTT2 Antibody(Center) - Protocols

Provided below are standard protocols that you may find useful for product applications.

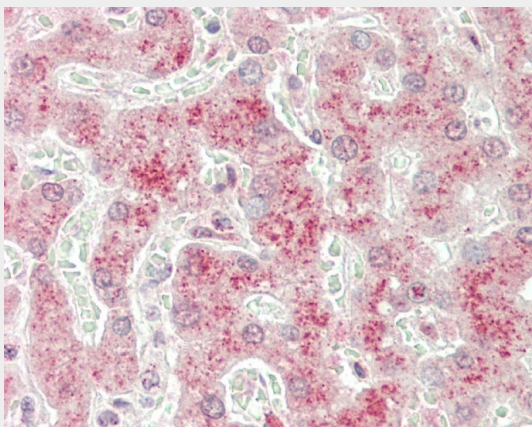
- [Western Blot](#)
- [Blocking Peptides](#)
- [Dot Blot](#)
- [Immunohistochemistry](#)
- [Immunofluorescence](#)
- [Immunoprecipitation](#)
- [Flow Cytometry](#)
- [Cell Culture](#)

GSTT2 Antibody(Center) - Images

GSTT2 Antibody (Center) (Cat. #AP19567c) western blot analysis in A549 cell line lysates (35ug/lane). This demonstrates the GSTT2 antibody detected the GSTT2 protein (arrow).



Formalin-fixed and paraffin-embedded H.adrenal tissue reacted with GSTT2 Antibody(Center) (Cat#AP19567c).



Formalin-fixed and paraffin-embedded H.liver tissue reacted with GSTT2 Antibody(Center) (Cat#AP19567c).

GSTT2 Antibody(Center) - Background

Glutathione S-transferase (GSTs) theta 2 (GSTT2) is a member of a superfamily of proteins that catalyze the conjugation of reduced glutathione to a variety of electrophilic and hydrophobic compounds. Human GSTs can be divided into five main classes: Alpha, Mu, Pi, Theta, and Zeta. The theta class members GSTT1 and GSTT2 share 55% amino acid sequence identity and both are thought to have an important role in human carcinogenesis. The theta genes have a similar structure, being composed of five exons with identical exon/intron boundaries.

GSTT2 Antibody(Center) - References

Moyer, A.M., et al. Cancer Epidemiol. Biomarkers Prev. 19(3):811-821(2010)
Canova, C., et al. Tumori 96(1):1-10(2010)
Wang, S., et al. Ann. Hum. Genet. 74(1):46-56(2010)
Gemignani, F., et al. Mutat. Res. 671 (1-2), 76-83 (2009) :
Tatemichi, M., et al. J. Hum. Genet. 54(10):557-563(2009)