

KCNK6 Antibody(C-term)
Affinity Purified Rabbit Polyclonal Antibody (Pab)
Catalog # AP19580b**Specification**

KCNK6 Antibody(C-term) - Product Information

Application	WB,E
Primary Accession	O9Y257
Other Accession	NP_004814.1
Reactivity	Human
Host	Rabbit
Clonality	Polyclonal
Isotype	Rabbit IgG
Calculated MW	33747
Antigen Region	263-292

KCNK6 Antibody(C-term) - Additional Information**Gene ID** 9424**Other Names**

Potassium channel subfamily K member 6, Inward rectifying potassium channel protein TWIK-2, TWIK-originated similarity sequence, KCNK6, TOSS, TWIK2

Target/Specificity

This KCNK6 antibody is generated from rabbits immunized with a KLH conjugated synthetic peptide between 263-292 amino acids from the C-terminal region of human KCNK6.

Dilution

WB~~1:1000

E~~Use at an assay dependent concentration.

Format

Purified polyclonal antibody supplied in PBS with 0.09% (W/V) sodium azide. This antibody is purified through a protein A column, followed by peptide affinity purification.

Storage

Maintain refrigerated at 2-8°C for up to 2 weeks. For long term storage store at -20°C in small aliquots to prevent freeze-thaw cycles.

Precautions

KCNK6 Antibody(C-term) is for research use only and not for use in diagnostic or therapeutic procedures.

KCNK6 Antibody(C-term) - Protein Information**Name** KCNK6 ([HGNC:6281](#))

Function K(+) channel that conducts outward rectifying currents at the membranes of the endolysosomal system (PubMed:[10887187](#), PubMed:[28381826](#)). Active in lysosomes where it regulates lysosome numbers and size (PubMed:[28381826](#)). In macrophages, enables K(+) efflux coupled to ATP-induced NLRP3 inflammasome activation upon bacterial infection. Cooperates with ATP-gated P2RX7 channels to activate NLRP3 inflammasome, with P2RX7 conducting Ca(2+) and Na(+) influx that sets the membrane potential for K(+) efflux (By similarity).

Cellular Location

Late endosome membrane; Multi-pass membrane protein. Lysosome membrane; Multi-pass membrane protein

Tissue Location

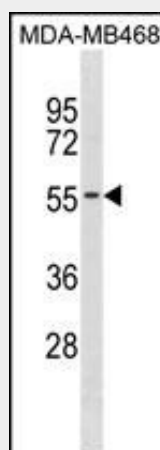
Widespread expression, detected in all tissues tested except for skeletal muscle. Strongest expression in placenta, pancreas, heart, colon and spleen, lower levels detected in peripheral blood leukocytes, lung, liver, kidney and thymus. Lowest expression detected in brain.

KCNK6 Antibody(C-term) - Protocols

Provided below are standard protocols that you may find useful for product applications.

- [Western Blot](#)
- [Blocking Peptides](#)
- [Dot Blot](#)
- [Immunohistochemistry](#)
- [Immunofluorescence](#)
- [Immunoprecipitation](#)
- [Flow Cytometry](#)
- [Cell Culture](#)

KCNK6 Antibody(C-term) - Images



KCNK6 Antibody (C-term) (Cat. #AP19580b) western blot analysis in MDA-MB468 cell line lysates (35ug/lane). This demonstrates the KCNK6 antibody detected the KCNK6 protein (arrow).

KCNK6 Antibody(C-term) - Background

This gene encodes one of the members of the superfamily of potassium channel proteins containing two pore-forming P domains. This channel protein, considered an open rectifier, is widely expressed. It is stimulated by arachidonic acid, and inhibited by

internal acidification and volatile anaesthetics. [provided by RefSeq].

KCNK6 Antibody(C-term) - References

Sebastiani, P., et al. Am. J. Hematol. 85(1):29-35(2010)
Gierten, J., et al. Br. J. Pharmacol. 154(8):1680-1690(2008)
Goldstein, S.A., et al. Pharmacol. Rev. 57(4):527-540(2005)
Mhatre, A.N., et al. J. Neurosci. Res. 75(1):25-31(2004)
Goldstein, S.A., et al. Nat. Rev. Neurosci. 2(3):175-184(2001)