

**GLT8D4 Antibody(C-term)**  
**Affinity Purified Rabbit Polyclonal Antibody (Pab)**  
**Catalog # AP19586b**

**Specification**

---

**GLT8D4 Antibody(C-term) - Product Information**

Application	WB,E
Primary Accession	<a href="#">A0PJZ3</a>
Other Accession	<a href="#">NP_001073862.1</a>
Reactivity	Human
Host	Rabbit
Clonality	Polyclonal
Isotype	Rabbit IgG
Antigen Region	404-432

**GLT8D4 Antibody(C-term) - Additional Information**

**Gene ID** 727936

**Other Names**

Glucoside xylosyltransferase 2, 242n2, Glycosyltransferase 8 domain-containing protein 4, GXYLT2, GLT8D4

**Target/Specificity**

This GLT8D4 antibody is generated from rabbits immunized with a KLH conjugated synthetic peptide between 404-432 amino acids from the C-terminal region of human GLT8D4.

**Dilution**

WB~~1:2000

E~~Use at an assay dependent concentration.

**Format**

Purified polyclonal antibody supplied in PBS with 0.09% (W/V) sodium azide. This antibody is purified through a protein A column, followed by peptide affinity purification.

**Storage**

Maintain refrigerated at 2-8°C for up to 2 weeks. For long term storage store at -20°C in small aliquots to prevent freeze-thaw cycles.

**Precautions**

GLT8D4 Antibody(C-term) is for research use only and not for use in diagnostic or therapeutic procedures.

**GLT8D4 Antibody(C-term) - Protein Information**

**Name** GXYLT2

**Synonyms** GLT8D4

**Function** Glycosyltransferase which elongates the O-linked glucose attached to EGF-like repeats in the extracellular domain of Notch proteins by catalyzing the addition of xylose.

**Cellular Location**

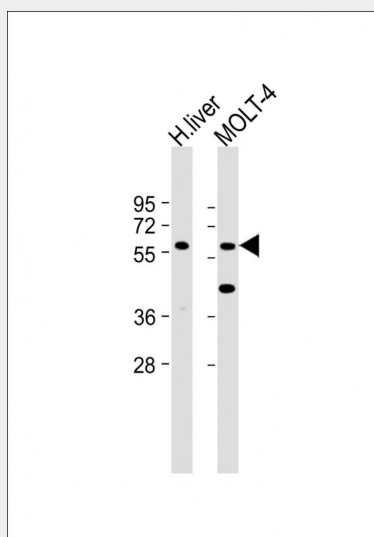
Membrane; Single-pass type II membrane protein

**GLT8D4 Antibody(C-term) - Protocols**

Provided below are standard protocols that you may find useful for product applications.

- [Western Blot](#)
- [Blocking Peptides](#)
- [Dot Blot](#)
- [Immunohistochemistry](#)
- [Immunofluorescence](#)
- [Immunoprecipitation](#)
- [Flow Cytometry](#)
- [Cell Culture](#)

**GLT8D4 Antibody(C-term) - Images**



All lanes : Anti-GLT8D4 Antibody (C-term) at 1:2000 dilution Lane 1: Human liver lysate Lane 2: MOLT-4 whole cell lysate Lysates/proteins at 20 µg per lane. Secondary Goat Anti-Rabbit IgG, (H+L), Peroxidase conjugated at 1/10000 dilution. Predicted band size : 51 kDa Blocking/Dilution buffer: 5% NFDM/TBST.

**GLT8D4 Antibody(C-term) - Background**

GXYLT2 is a xylosyltransferase (EC 2.4.2.-) that adds the first xylose to O-glucose-modified residues in the epidermal growth factor (EGF; MIM 131530) repeats of proteins such as NOTCH1 (MIM 190198) (Sethi et al., 2010 [PubMed 19940119]).

**GLT8D4 Antibody(C-term) - References**

Sethi, M.K., et al. J. Biol. Chem. 285(3):1582-1586(2010)