

Rat Arg1 Antibody (C-term)
Affinity Purified Rabbit Polyclonal Antibody (Pab)
Catalog # AP19587b

Specification

Rat Arg1 Antibody (C-term) - Product Information

Application	WB,E
Primary Accession	P07824
Other Accession	NP_058830.2
Reactivity	Rat
Host	Rabbit
Clonality	Polyclonal
Isotype	Rabbit IgG
Antigen Region	292-318

Rat Arg1 Antibody (C-term) - Additional Information

Gene ID 29221

Other Names

Arginase-1, Liver-type arginase, Type I arginase, Arg1

Target/Specificity

This Rat Arg1 antibody is generated from rabbits immunized with a KLH conjugated synthetic peptide between 292-318 amino acids from the C-terminal region of rat Arg1.

Dilution

WB~~1:1000

E~~Use at an assay dependent concentration.

Format

Purified polyclonal antibody supplied in PBS with 0.09% (W/V) sodium azide. This antibody is purified through a protein A column, followed by peptide affinity purification.

Storage

Maintain refrigerated at 2-8°C for up to 2 weeks. For long term storage store at -20°C in small aliquots to prevent freeze-thaw cycles.

Precautions

Rat Arg1 Antibody (C-term) is for research use only and not for use in diagnostic or therapeutic procedures.

Rat Arg1 Antibody (C-term) - Protein Information

Name Arg1

Function Key element of the urea cycle converting L-arginine to urea and L-ornithine, which is further metabolized into metabolites proline and polyamides that drive collagen synthesis and

bioenergetic pathways critical for cell proliferation, respectively; the urea cycle takes place primarily in the liver and, to a lesser extent, in the kidneys.

Cellular Location

Cytoplasm {ECO:0000250|UniProtKB:P05089}. Cytoplasmic granule {ECO:0000250|UniProtKB:P05089}

Tissue Location

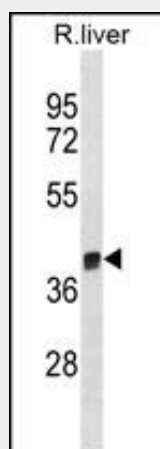
Detected in liver (at protein level).

Rat Arg1 Antibody (C-term) - Protocols

Provided below are standard protocols that you may find useful for product applications.

- [Western Blot](#)
- [Blocking Peptides](#)
- [Dot Blot](#)
- [Immunohistochemistry](#)
- [Immunofluorescence](#)
- [Immunoprecipitation](#)
- [Flow Cytometry](#)
- [Cell Culture](#)

Rat Arg1 Antibody (C-term) - Images



Rat Arg1 Antibody (C-term) (Cat. #AP19587b) western blot analysis in rat liver tissue lysates (35ug/lane). This demonstrates the Rat Arg1 antibody detected the Rat Arg1 protein (arrow).

Rat Arg1 Antibody (C-term) - Background

catalyzes the hydrolysis of arginine to ornithine and urea in arginine metabolism; regulates nitric oxide production [RGD].

Rat Arg1 Antibody (C-term) - References

Warnken, M., et al. Naunyn Schmiedeberg's Arch. Pharmacol. 381(4):297-304(2010)
Zhu, W., et al. Am. J. Physiol., Cell Physiol. 298 (4), C952-C960 (2010) :
Bagnost, T., et al. Hypertens. Res. 32(12):1130-1135(2009)
Kim, J.H., et al. J. Appl. Physiol. 107(4):1249-1257(2009)
Deng, K., et al. J. Neurosci. 29(30):9545-9552(2009)