

**PFDN2 Antibody(C-term)**  
**Affinity Purified Rabbit Polyclonal Antibody (Pab)**  
**Catalog # AP19588b**

**Specification**

---

**PFDN2 Antibody(C-term) - Product Information**

Application	WB,E
Primary Accession	<a href="#">O9UHV9</a>
Other Accession	<a href="#">B0BN18</a> , <a href="#">O70591</a> , <a href="#">A1A4P5</a> , <a href="#">NP_036526.2</a>
Reactivity	Human, Mouse
Predicted	Bovine, Rat
Host	Rabbit
Clonality	Polyclonal
Isotype	Rabbit IgG
Calculated MW	16648
Antigen Region	97-125

**PFDN2 Antibody(C-term) - Additional Information**

**Gene ID** 5202

**Other Names**

Prefoldin subunit 2, PFDN2, PFD2

**Target/Specificity**

This PFDN2 antibody is generated from rabbits immunized with a KLH conjugated synthetic peptide between 97-125 amino acids from the C-terminal region of human PFDN2.

**Dilution**

WB~~1:1000

E~~Use at an assay dependent concentration.

**Format**

Purified polyclonal antibody supplied in PBS with 0.09% (W/V) sodium azide. This antibody is purified through a protein A column, followed by peptide affinity purification.

**Storage**

Maintain refrigerated at 2-8°C for up to 2 weeks. For long term storage store at -20°C in small aliquots to prevent freeze-thaw cycles.

**Precautions**

PFDN2 Antibody(C-term) is for research use only and not for use in diagnostic or therapeutic procedures.

**PFDN2 Antibody(C-term) - Protein Information**

**Name** PFDN2

**Synonyms** PFD2

**Function** Binds specifically to cytosolic chaperonin (c-CPN) and transfers target proteins to it. Binds to nascent polypeptide chain and promotes folding in an environment in which there are many competing pathways for nonnative proteins.

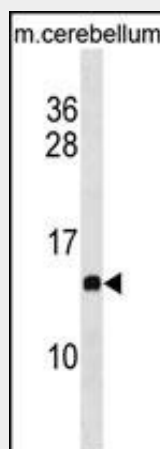
**Cellular Location**

Nucleus. Cytoplasm. Mitochondrion

**PFDN2 Antibody(C-term) - Protocols**

Provided below are standard protocols that you may find useful for product applications.

- [Western Blot](#)
- [Blocking Peptides](#)
- [Dot Blot](#)
- [Immunohistochemistry](#)
- [Immunofluorescence](#)
- [Immunoprecipitation](#)
- [Flow Cytometry](#)
- [Cell Culture](#)

**PFDN2 Antibody(C-term) - Images**

PFDN2 Antibody (C-term) (Cat. #AP19588b) western blot analysis in mouse cerebellum tissue lysates (35ug/lane). This demonstrates the PFDN2 antibody detected the PFDN2 protein (arrow).

**PFDN2 Antibody(C-term) - Background**

This gene encodes a member of the prefoldin beta subunit family. The encoded protein is one of six subunits of prefoldin, a molecular chaperone complex that binds and stabilizes newly synthesized polypeptides, thereby allowing them to fold correctly. The complex, consisting of two alpha and four beta subunits, forms a double beta barrel assembly with six protruding coiled-coils.

**PFDN2 Antibody(C-term) - References**

Cloutier, P., et al. Methods 48(4):381-386(2009) Ewing, R.M., et al. Mol. Syst. Biol. 3, 89 (2007) : Simons, C.T., et al. J. Biol. Chem. 279(6):4196-4203(2004) Bouwmeester, T., et al. Nat. Cell Biol. 6(2):97-105(2004) Hu, R.M., et al. Proc. Natl. Acad. Sci. U.S.A. 97(17):9543-9548(2000)