

RMP (URI) Antibody (C-term)
Purified Rabbit Polyclonal Antibody (Pab)
Catalog # AP1960b**Specification**

RMP (URI) Antibody (C-term) - Product Information

Application	WB,E
Primary Accession	O94763
Reactivity	Human
Host	Rabbit
Clonality	Polyclonal
Isotype	Rabbit IgG
Calculated MW	59832
Antigen Region	347-376

RMP (URI) Antibody (C-term) - Additional Information**Gene ID** 8725**Other Names**

Unconventional prefoldin RPB5 interactor 1, Protein NNX3, Protein phosphatase 1 regulatory subunit 19, RNA polymerase II subunit 5-mediating protein, RPB5-mediating protein, URI1, C19orf2, NNX3, PPP1R19, RMP, URI

Target/Specificity

This RMP (URI) antibody is generated from rabbits immunized with a KLH conjugated synthetic peptide between 347-376 amino acids from the C-terminal region of human RMP (URI).

Dilution

WB~~1:1000

E~~Use at an assay dependent concentration.

Format

Purified polyclonal antibody supplied in PBS with 0.09% (W/V) sodium azide. This antibody is prepared by Saturated Ammonium Sulfate (SAS) precipitation followed by dialysis against PBS.

Storage

Maintain refrigerated at 2-8°C for up to 2 weeks. For long term storage store at -20°C in small aliquots to prevent freeze-thaw cycles.

Precautions

RMP (URI) Antibody (C-term) is for research use only and not for use in diagnostic or therapeutic procedures.

RMP (URI) Antibody (C-term) - Protein Information**Name** URI1

Synonyms C19orf2, NNX3, PPP1R19, RMP, URI

Function Involved in gene transcription regulation. Acts as a transcriptional repressor in concert with the corepressor UXT to regulate androgen receptor (AR) transcription. May act as a tumor suppressor to repress AR-mediated gene transcription and to inhibit anchorage-independent growth in prostate cancer cells. Required for cell survival in ovarian cancer cells. Together with UXT, associates with chromatin to the NKX3-1 promoter region. Antagonizes transcriptional modulation via hepatitis B virus X protein.

Cellular Location

Nucleus. Cytoplasm. Mitochondrion. Cell projection, dendrite. Note=Colocalizes with PFDN2, PFDN4, PPP1CC, RPS6KB1 and STAP1 at mitochondrion

Tissue Location

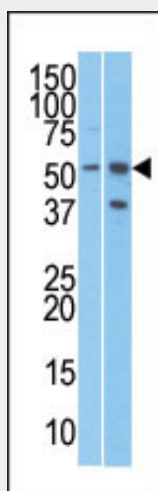
Ubiquitous. Expressed in ovarian cancers (at protein level). Expressed strongly in skeletal muscle. Expressed weakly in brain, heart, pancreas and in prostate epithelial cells

RMP (URI) Antibody (C-term) - Protocols

Provided below are standard protocols that you may find useful for product applications.

- [Western Blot](#)
- [Blocking Peptides](#)
- [Dot Blot](#)
- [Immunohistochemistry](#)
- [Immunofluorescence](#)
- [Immunoprecipitation](#)
- [Flow Cytometry](#)
- [Cell Culture](#)

RMP (URI) Antibody (C-term) - Images



The anti-RMP Pab (Cat. #AP1960b) is used in Western blot to detect RMP in T47D (left) and Jurkat (right) cell line lysates.

RMP (URI) Antibody (C-term) - Background

The protein encoded by this gene binds to RNA polymerase II subunit 5 (RPB5) and negatively modulates transcription through its binding to RPB5. The encoded protein seems to have inhibitory

effects on various types of activated transcription, but it requires the RPB5-binding region. This protein acts as a corepressor. It is suggested that it may require signaling processes for its function or that it negatively modulates genes in the chromatin structure. Two alternatively spliced transcript variants encoding different isoforms have been described for this gene.

RMP (URI) Antibody (C-term) - References

Delgermaa, L., et al., Mol. Cell. Biol. 24(19):8556-8566 (2004).
Gstaiger, M., et al., Science 302(5648):1208-1212 (2003).
Van Leuven, F., et al., Genomics 54(3):511-520 (1998).
Dorjsuren, D., et al., Mol. Cell. Biol. 18(12):7546-7555 (1998).