

OPCML Antibody(Center)
Affinity Purified Rabbit Polyclonal Antibody (Pab)
Catalog # AP19622c**Specification**

OPCML Antibody(Center) - Product Information

Application	WB,E
Primary Accession	Q14982
Other Accession	P32736 , P11834 , NP_002536.1
Reactivity	Human
Predicted	Bovine, Rat
Host	Rabbit
Clonality	Polyclonal
Isotype	Rabbit IgG
Antigen Region	172-200

OPCML Antibody(Center) - Additional Information**Gene ID** 4978**Other Names**

Opioid-binding protein/cell adhesion molecule, OBCAM, OPCML, Opioid-binding cell adhesion molecule, IgLON family member 1, OPCML, IGLON1, OBCAM

Target/Specificity

This OPCML antibody is generated from rabbits immunized with a KLH conjugated synthetic peptide between 172-200 amino acids from the Central region of human OPCML.

Dilution

WB~~1:1000

E~~Use at an assay dependent concentration.

Format

Purified polyclonal antibody supplied in PBS with 0.09% (W/V) sodium azide. This antibody is purified through a protein A column, followed by peptide affinity purification.

Storage

Maintain refrigerated at 2-8°C for up to 2 weeks. For long term storage store at -20°C in small aliquots to prevent freeze-thaw cycles.

Precautions

OPCML Antibody(Center) is for research use only and not for use in diagnostic or therapeutic procedures.

OPCML Antibody(Center) - Protein Information**Name** OPCML

Synonyms IGLON1, OBCAM

Function Binds opioids in the presence of acidic lipids; probably involved in cell contact.

Cellular Location

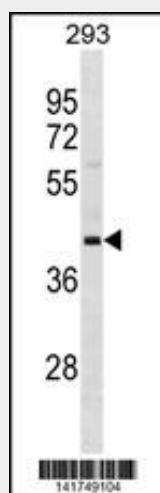
Cell membrane; Lipid-anchor, GPI- anchor

OPCML Antibody(Center) - Protocols

Provided below are standard protocols that you may find useful for product applications.

- [Western Blot](#)
- [Blocking Peptides](#)
- [Dot Blot](#)
- [Immunohistochemistry](#)
- [Immunofluorescence](#)
- [Immunoprecipitation](#)
- [Flow Cytometry](#)
- [Cell Culture](#)

OPCML Antibody(Center) - Images



OPCML Antibody (Center) (Cat. #AP19622c) western blot analysis in 293 cell line lysates (35ug/lane). This demonstrates the OPCML antibody detected the OPCML protein (arrow).

OPCML Antibody(Center) - Background

This gene encodes a member of the IgLON subfamily in the immunoglobulin protein superfamily. The encoded protein is localized in the plasma membrane and may have an accessory role in opioid receptor function. This gene has an ortholog in rat and bovine. The opioid binding-cell adhesion molecule encoded by the rat gene binds opioid alkaloids in the presence of acidic lipids, exhibits selectivity for mu ligands and acts as a GPI-anchored protein. Since the encoded protein is highly conserved in species during evolution, it may have a fundamental role in mammalian systems. Two transcript variants encoding different isoforms have been found for this gene.

OPCML Antibody(Center) - References

Bailey, S.D., et al. Diabetes Care (2010) In press :
Rose, J.E., et al. Mol. Med. 16 (7-8), 247-253 (2010) :
Talmud, P.J., et al. Am. J. Hum. Genet. 85(5):628-642(2009)
Stolk, L., et al. Nat. Genet. (2009) In press :
Cui, Y., et al. PLoS ONE 3 (8), E2990 (2008) :