

SRRM3 Antibody(Center)
Affinity Purified Rabbit Polyclonal Antibody (Pab)
Catalog # AP19628c**Specification**

SRRM3 Antibody(Center) - Product Information

Application	WB,E
Primary Accession	A6NNA2
Reactivity	Human, Mouse
Host	Rabbit
Clonality	Polyclonal
Isotype	Rabbit IgG
Calculated MW	65249
Antigen Region	264-291

SRRM3 Antibody(Center) - Additional Information**Other Names**

Serine/arginine repetitive matrix protein 3, SRRM3

Target/Specificity

This SRRM3 antibody is generated from rabbits immunized with a KLH conjugated synthetic peptide between 264-291 amino acids from the Central region of human SRRM3.

Dilution

WB~~1:1000

E~~Use at an assay dependent concentration.

Format

Purified polyclonal antibody supplied in PBS with 0.09% (W/V) sodium azide. This antibody is purified through a protein A column, followed by peptide affinity purification.

Storage

Maintain refrigerated at 2-8°C for up to 2 weeks. For long term storage store at -20°C in small aliquots to prevent freeze-thaw cycles.

Precautions

SRRM3 Antibody(Center) is for research use only and not for use in diagnostic or therapeutic procedures.

SRRM3 Antibody(Center) - Protein Information**Name** SRRM3

Function May play a role in regulating breast cancer cell invasiveness (PubMed:[26053433](#)). May be involved in RYBP-mediated breast cancer progression (PubMed:[27748911](#)).

Tissue Location

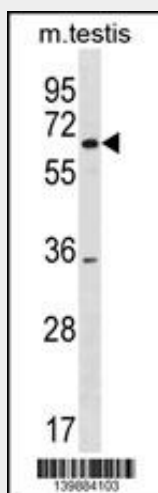
Expressed in breast cancer cell lines.

SRRM3 Antibody(Center) - Protocols

Provided below are standard protocols that you may find useful for product applications.

- [Western Blot](#)
- [Blocking Peptides](#)
- [Dot Blot](#)
- [Immunohistochemistry](#)
- [Immunofluorescence](#)
- [Immunoprecipitation](#)
- [Flow Cytometry](#)
- [Cell Culture](#)

SRRM3 Antibody(Center) - Images



SRRM3 Antibody (Center) (Cat. #AP19628c) western blot analysis in mouse testis tissue lysates (35ug/lane). This demonstrates the SRRM3 antibody detected the SRRM3 protein (arrow).

SRRM3 Antibody(Center) - Background

The function of this protein remains unknown.