

**Mouse Shc4 Antibody(C-term)**  
**Affinity Purified Rabbit Polyclonal Antibody (Pab)**  
**Catalog # AP19647b**

**Specification**

---

**Mouse Shc4 Antibody(C-term) - Product Information**

Application	WB,E
Primary Accession	<a href="#">O6S5L9</a>
Other Accession	<a href="#">NP_950187.1</a>
Reactivity	Mouse
Host	Rabbit
Clonality	Polyclonal
Isotype	Rabbit IgG
Calculated MW	68519
Antigen Region	590-617

**Mouse Shc4 Antibody(C-term) - Additional Information**

**Gene ID** 271849

**Other Names**

SHC-transforming protein 4, Rai-like protein, RaLP, SHC-transforming protein D, mShcD, Src homology 2 domain-containing-transforming protein C4, SH2 domain protein C4, Shc4, Shcd

**Target/Specificity**

This Mouse Shc4 antibody is generated from rabbits immunized with a KLH conjugated synthetic peptide between 590-617 amino acids from the C-terminal region of mouse Shc4.

**Dilution**

WB~~1:1000

E~~Use at an assay dependent concentration.

**Format**

Purified polyclonal antibody supplied in PBS with 0.09% (W/V) sodium azide. This antibody is purified through a protein A column, followed by peptide affinity purification.

**Storage**

Maintain refrigerated at 2-8°C for up to 2 weeks. For long term storage store at -20°C in small aliquots to prevent freeze-thaw cycles.

**Precautions**

Mouse Shc4 Antibody(C-term) is for research use only and not for use in diagnostic or therapeutic procedures.

**Mouse Shc4 Antibody(C-term) - Protein Information**

**Name** Shc4

## Synonyms Shcd

**Function** Activates both Ras-dependent and Ras-independent migratory pathways in melanomas. Contributes to the early phases of agrin-induced tyrosine phosphorylation of CHRNA1.

## Cellular Location

Postsynaptic cell membrane. Note=Colocalized with MUSK at the neuromuscular junction

## Tissue Location

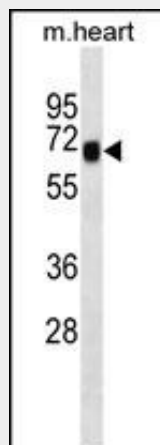
Expressed in both brain and skeletal muscle; widely expressed in brain namely olfactory bulb, cortex, hippocampus, striatum, thalamus, and brain stem (at protein level). Only expressed in melanomas. Weakly expressed in normal melanocytes and benign nevi Highly expressed at the transition from radial growth phase to vertical growth phase and metastatic melanomas, when tumor cells acquire migratory competence and invasive potential

## Mouse Shc4 Antibody(C-term) - Protocols

Provided below are standard protocols that you may find useful for product applications.

- [Western Blot](#)
- [Blocking Peptides](#)
- [Dot Blot](#)
- [Immunohistochemistry](#)
- [Immunofluorescence](#)
- [Immunoprecipitation](#)
- [Flow Cytometry](#)
- [Cell Culture](#)

## Mouse Shc4 Antibody(C-term) - Images



Mouse Shc4 Antibody (C-term) (Cat. #AP19647b) western blot analysis in mouse heart tissue lysates (35ug/lane). This demonstrates the Mouse Shc4 antibody detected the Mouse Shc4 protein (arrow).

## Mouse Shc4 Antibody(C-term) - Background

Activates both Ras-dependent and Ras-independent migratory pathways in melanomas. Contributes to the early phases of agrin-induced tyrosine phosphorylation of CHRNA1.

## Mouse Shc4 Antibody(C-term) - References

Jones, N., et al. Mol. Cell. Biol. 27(13):4759-4773(2007)  
Fagiani, E., et al. Cancer Res. 67(7):3064-3073(2007)