

BRAP Antibody(N-term)
Affinity Purified Rabbit Polyclonal Antibody (Pab)
Catalog # AP19664a**Specification**

BRAP Antibody(N-term) - Product Information

Application	WB,E
Primary Accession	O7Z569
Other Accession	NP_006759.3
Reactivity	Human
Host	Rabbit
Clonality	Polyclonal
Isotype	Rabbit IgG
Calculated MW	67305
Antigen Region	66-95

BRAP Antibody(N-term) - Additional Information**Gene ID** 8315**Other Names**

BRCA1-associated protein, 632-, BRAP2, Impedes mitogenic signal propagation, IMP, RING finger protein 52, Renal carcinoma antigen NY-REN-63, BRAP (HGNC:1099), RNF52

Target/Specificity

This BRAP antibody is generated from rabbits immunized with a KLH conjugated synthetic peptide between 66-95 amino acids from the N-terminal region of human BRAP.

Dilution

WB~~1:1000

E~~Use at an assay dependent concentration.

Format

Purified polyclonal antibody supplied in PBS with 0.09% (W/V) sodium azide. This antibody is purified through a protein A column, followed by peptide affinity purification.

Storage

Maintain refrigerated at 2-8°C for up to 2 weeks. For long term storage store at -20°C in small aliquots to prevent freeze-thaw cycles.

Precautions

BRAP Antibody(N-term) is for research use only and not for use in diagnostic or therapeutic procedures.

BRAP Antibody(N-term) - Protein Information

Name BRAP ([HGNC:1099](#))

Synonyms RNF52

Function Negatively regulates MAP kinase activation by limiting the formation of Raf/MEK complexes probably by inactivation of the KSR1 scaffold protein. Also acts as a Ras responsive E3 ubiquitin ligase that, on activation of Ras, is modified by auto-polyubiquitination resulting in the release of inhibition of Raf/MEK complex formation. May also act as a cytoplasmic retention protein with a role in regulating nuclear transport.

Cellular Location

Cytoplasm.

Tissue Location

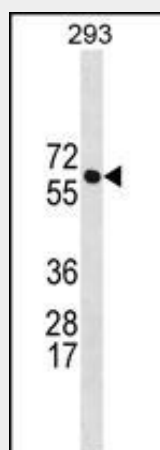
Expressed in breast epithelial cell lines.

BRAP Antibody(N-term) - Protocols

Provided below are standard protocols that you may find useful for product applications.

- [Western Blot](#)
- [Blocking Peptides](#)
- [Dot Blot](#)
- [Immunohistochemistry](#)
- [Immunofluorescence](#)
- [Immunoprecipitation](#)
- [Flow Cytometry](#)
- [Cell Culture](#)

BRAP Antibody(N-term) - Images



BRAP Antibody (N-term) (Cat. #AP19664a) western blot analysis in 293 cell line lysates (35ug/lane). This demonstrates the BRAP antibody detected the BRAP protein (arrow).

BRAP Antibody(N-term) - Background

The protein encoded by this gene was identified by its ability to bind to the nuclear localization signal of BRCA1 and other proteins. It is a cytoplasmic protein which may regulate nuclear targeting by retaining proteins with a nuclear localization

signal in the cytoplasm.

BRAP Antibody(N-term) - References

Fulcher, A.J., et al. FASEB J. 24(5):1454-1466(2010)
Kamatani, Y., et al. Nat. Genet. 42(3):210-215(2010)
Ganesh, S.K., et al. Nat. Genet. 41(11):1191-1198(2009)
Hinohara, K., et al. J. Hum. Genet. 54(11):642-646(2009)
Cui, R., et al. Gastroenterology 137(5):1768-1775(2009)