

**MYL12B Antibody(N-term)**  
**Affinity Purified Rabbit Polyclonal Antibody (Pab)**  
**Catalog # AP19667a**

**Specification**

---

**MYL12B Antibody(N-term) - Product Information**

Application	WB,E
Primary Accession	<a href="#">O14950</a>
Other Accession	<a href="#">P18666</a> , <a href="#">Q3THE2</a> , <a href="#">NP_001138416.1</a>
Reactivity	Human
Predicted	Mouse, Rat
Host	Rabbit
Clonality	Polyclonal
Isotype	Rabbit IgG
Calculated MW	19779
Antigen Region	1-30

**MYL12B Antibody(N-term) - Additional Information**

**Gene ID** 103910

**Other Names**

Myosin regulatory light chain 12B, MLC-2A, MLC-2, Myosin regulatory light chain 2-B, smooth muscle isoform, Myosin regulatory light chain 20 kDa, MLC20, Myosin regulatory light chain MRLC2, SHUJUN-1, MYL12B, MRLC2, MYLC2B

**Target/Specificity**

This MYL12B antibody is generated from rabbits immunized with a KLH conjugated synthetic peptide between 1-30 amino acids from the N-terminal region of human MYL12B.

**Dilution**

WB~~1:1000

E~~Use at an assay dependent concentration.

**Format**

Purified polyclonal antibody supplied in PBS with 0.09% (W/V) sodium azide. This antibody is purified through a protein A column, followed by peptide affinity purification.

**Storage**

Maintain refrigerated at 2-8°C for up to 2 weeks. For long term storage store at -20°C in small aliquots to prevent freeze-thaw cycles.

**Precautions**

MYL12B Antibody(N-term) is for research use only and not for use in diagnostic or therapeutic procedures.

**MYL12B Antibody(N-term) - Protein Information**

**Name** MYL12B

**Synonyms** MRLC2, MYLC2B

**Function** Myosin regulatory subunit that plays an important role in regulation of both smooth muscle and nonmuscle cell contractile activity via its phosphorylation. Phosphorylation triggers actin polymerization in vascular smooth muscle. Implicated in cytokinesis, receptor capping, and cell locomotion.

**Tissue Location**

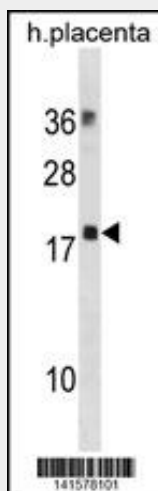
Ubiquitously expressed in various hematopoietic cells.

**MYL12B Antibody(N-term) - Protocols**

Provided below are standard protocols that you may find useful for product applications.

- [Western Blot](#)
- [Blocking Peptides](#)
- [Dot Blot](#)
- [Immunohistochemistry](#)
- [Immunofluorescence](#)
- [Immunoprecipitation](#)
- [Flow Cytometry](#)
- [Cell Culture](#)

**MYL12B Antibody(N-term) - Images**



MYL12B Antibody (N-term) (Cat. #AP19667a) western blot analysis in human placenta tissue lysates (35ug/lane). This demonstrates the MYL12B antibody detected the MYL12B protein (arrow).

**MYL12B Antibody(N-term) - Background**

The activity of nonmuscle myosin II (see MYH9; MIM 160775) is regulated by phosphorylation of a regulatory light chain, such as MRLC2. This phosphorylation results in higher MgATPase activity and the assembly of myosin II filaments (Iwasaki et al., 2001 [PubMed 11942626]).

**MYL12B Antibody(N-term) - References**

Martins-de-Souza, D., et al. Eur Arch Psychiatry Clin Neurosci 259(3):151-163(2009)  
Umeda, D., et al. Biochem. Biophys. Res. Commun. 333(2):628-635(2005)  
Li, T.B., et al. Acta Biochim. Biophys. Sin. (Shanghai) 36(6):412-418(2004)  
Webb, R.C. Adv Physiol Educ 27 (1-4), 201-206 (2003) :  
Iwasaki, T., et al. Cell Struct. Funct. 26(6):677-683(2001)