

VPS25 Antibody(C-term)
Affinity Purified Rabbit Polyclonal Antibody (Pab)
Catalog # AP19683b**Specification**

VPS25 Antibody(C-term) - Product Information

Application	WB,E
Primary Accession	Q9BRG1
Other Accession	Q5E9A6 , NP_115729.1
Reactivity	Mouse
Predicted	Bovine
Host	Rabbit
Clonality	Polyclonal
Isotype	Rabbit IgG
Calculated MW	20748
Antigen Region	116-144

VPS25 Antibody(C-term) - Additional Information**Gene ID** 84313**Other Names**

Vacuolar protein-sorting-associated protein 25, hVps25, Dermal papilla-derived protein 9, ELL-associated protein of 20 kDa, ESCRT-II complex subunit VPS25, VPS25, DERP9, EAP20

Target/Specificity

This VPS25 antibody is generated from rabbits immunized with a KLH conjugated synthetic peptide between 116-144 amino acids from the C-terminal region of human VPS25.

Dilution

WB~~1:1000

Format

Purified polyclonal antibody supplied in PBS with 0.09% (W/V) sodium azide. This antibody is purified through a protein A column, followed by peptide affinity purification.

Storage

Maintain refrigerated at 2-8°C for up to 2 weeks. For long term storage store at -20°C in small aliquots to prevent freeze-thaw cycles.

Precautions

VPS25 Antibody(C-term) is for research use only and not for use in diagnostic or therapeutic procedures.

VPS25 Antibody(C-term) - Protein Information**Name** VPS25

Synonyms DERP9, EAP20

Function Component of the ESCRT-II complex (endosomal sorting complex required for transport II), which is required for multivesicular body (MVB) formation and sorting of endosomal cargo proteins into MVBs. The MVB pathway mediates delivery of transmembrane proteins into the lumen of the lysosome for degradation. The ESCRT-II complex is probably involved in the recruitment of the ESCRT-III complex. The ESCRT-II complex may also play a role in transcription regulation, possibly via its interaction with ELL. The ESCRT-II complex may be involved in facilitating the budding of certain RNA viruses.

Cellular Location

Cytoplasm. Endosome membrane. Nucleus, nucleoplasm. Note=Distributes diffusely throughout the cytoplasm and nucleoplasm, but exhibits a punctate distribution on coexpression with CHMP6

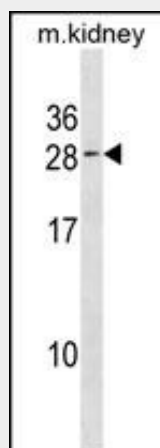
Tissue Location

Expressed at the mRNA level in kidney, liver, pancreas, and placenta. Lower levels of expression are found in heart, skeletal muscle, brain and lung.

VPS25 Antibody(C-term) - Protocols

Provided below are standard protocols that you may find useful for product applications.

- [Western Blot](#)
- [Blocking Peptides](#)
- [Dot Blot](#)
- [Immunohistochemistry](#)
- [Immunofluorescence](#)
- [Immunoprecipitation](#)
- [Flow Cytometry](#)
- [Cell Culture](#)

VPS25 Antibody(C-term) - Images

VPS25 Antibody (C-term) (Cat. #AP19683b) western blot analysis in kidney cell line lysates (35ug/lane). This demonstrates the VPS25 antibody detected the VPS25 protein (arrow).

VPS25 Antibody(C-term) - Background

VPS25, VPS36 (MIM 610903), and SNF8 (MIM 610904) form ESCRT-II (endosomal sorting complex required for transport II), a

complex involved in endocytosis of ubiquitinated membrane proteins. VPS25, VPS36, and SNF8 are also associated in a multiprotein complex with RNA polymerase II elongation factor (ELL; MIM 600284) (Slagsvold et al., 2005 [PubMed 15755741]; Kamura et al., 2001 [PubMed 11278625]).

VPS25 Antibody(C-term) - References

Bailey, S.D., et al. Diabetes Care 33(10):2250-2253(2010)
Talmud, P.J., et al. Am. J. Hum. Genet. 85(5):628-642(2009)
Im, Y.J., et al. Dev. Cell 17(2):234-243(2009)
Lamesch, P., et al. Genomics 89(3):307-315(2007)
Bowers, K., et al. J. Biol. Chem. 281(8):5094-5105(2006)