

OR1S2 Antibody(C-term)
Affinity Purified Rabbit Polyclonal Antibody (Pab)
Catalog # AP19686b**Specification**

OR1S2 Antibody(C-term) - Product Information

Application	WB,E
Primary Accession	O8NGQ3
Other Accession	NP_001004459.1
Reactivity	Human
Host	Rabbit
Clonality	Polyclonal
Isotype	Rabbit IgG
Calculated MW	36579
Antigen Region	221-249

OR1S2 Antibody(C-term) - Additional Information**Gene ID** 219958**Other Names**

Olfactory receptor 1S2, Olfactory receptor OR11-231, OR1S2

Target/Specificity

This OR1S2 antibody is generated from rabbits immunized with a KLH conjugated synthetic peptide between 221-249 amino acids from the C-terminal region of human OR1S2.

Dilution

WB~~1:1000

E~~Use at an assay dependent concentration.

Format

Purified polyclonal antibody supplied in PBS with 0.09% (W/V) sodium azide. This antibody is purified through a protein A column, followed by peptide affinity purification.

Storage

Maintain refrigerated at 2-8°C for up to 2 weeks. For long term storage store at -20°C in small aliquots to prevent freeze-thaw cycles.

Precautions

OR1S2 Antibody(C-term) is for research use only and not for use in diagnostic or therapeutic procedures.

OR1S2 Antibody(C-term) - Protein Information**Name** OR1S2**Function** Odorant receptor.

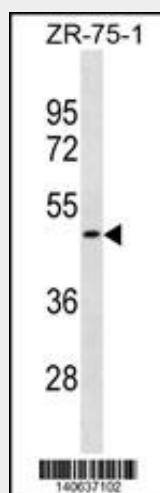
Cellular Location

Cell membrane; Multi-pass membrane protein.

OR1S2 Antibody(C-term) - Protocols

Provided below are standard protocols that you may find useful for product applications.

- [Western Blot](#)
- [Blocking Peptides](#)
- [Dot Blot](#)
- [Immunohistochemistry](#)
- [Immunofluorescence](#)
- [Immunoprecipitation](#)
- [Flow Cytometry](#)
- [Cell Culture](#)

OR1S2 Antibody(C-term) - Images

OR1S2 Antibody (C-term) (Cat. #AP19686b) western blot analysis in ZR-75-1 cell line lysates (35ug/lane). This demonstrates the OR1S2 antibody detected the OR1S2 protein (arrow).

OR1S2 Antibody(C-term) - Background

Olfactory receptors interact with odorant molecules in the nose, to initiate a neuronal response that triggers the perception of a smell. The olfactory receptor proteins are members of a large family of G-protein-coupled receptors (GPCR) arising from single coding-exon genes. Olfactory receptors share a 7-transmembrane domain structure with many neurotransmitter and hormone receptors and are responsible for the recognition and G protein-mediated transduction of odorant signals. The olfactory receptor gene family is the largest in the genome. The nomenclature assigned to the olfactory receptor genes and proteins for this organism is independent of other organisms.

OR1S2 Antibody(C-term) - References

Malnic, B., et al. Proc. Natl. Acad. Sci. U.S.A. 101(8):2584-2589(2004)

Fuchs, T., et al. Genomics 80(3):295-302(2002)