

Mouse Krt6a Antibody(Center)
Affinity Purified Rabbit Polyclonal Antibody (Pab)
Catalog # AP19689c

Specification

Mouse Krt6a Antibody(Center) - Product Information

Application	WB,E
Primary Accession	P50446
Other Accession	O9Z331 , NP_032502.3
Reactivity	Mouse
Host	Rabbit
Clonality	Polyclonal
Isotype	Rabbit IgG
Antigen Region	212-240

Mouse Krt6a Antibody(Center) - Additional Information

Gene ID 16687

Other Names

Keratin, type II cytoskeletal 6A, Cytokeratin-6A, CK-6A, Keratin-6-alpha, mK6-alpha, Keratin-6A, K6A, Krt6a, Ker2, Krt2-6, Krt2-6a, Krt6

Target/Specificity

This Mouse Krt6a antibody is generated from rabbits immunized with a KLH conjugated synthetic peptide between 212-240 amino acids from the Central region of mouse Krt6a.

Dilution

WB~~1:1000

E~~Use at an assay dependent concentration.

Format

Purified polyclonal antibody supplied in PBS with 0.09% (W/V) sodium azide. This antibody is purified through a protein A column, followed by peptide affinity purification.

Storage

Maintain refrigerated at 2-8°C for up to 2 weeks. For long term storage store at -20°C in small aliquots to prevent freeze-thaw cycles.

Precautions

Mouse Krt6a Antibody(Center) is for research use only and not for use in diagnostic or therapeutic procedures.

Mouse Krt6a Antibody(Center) - Protein Information

Name Krt6a

Synonyms Ker2, Krt2-6, Krt2-6a, Krt6

Function Epidermis-specific type I keratin involved in wound healing (PubMed:[10866680](#)). Involved in the activation of follicular keratinocytes after wounding, while it does not play a major role in keratinocyte proliferation or migration (PubMed:[10866680](#)). Participates in the regulation of epithelial migration by inhibiting the activity of SRC during wound repair (PubMed:[22529101](#)).

Tissue Location

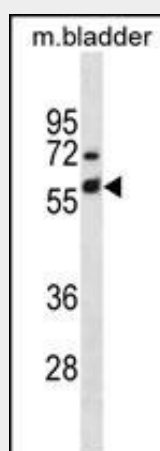
Predominates in the adult trunk skin, tongue, trachea/esophagus and eye. In adult skin, localization is restricted to hair follicles, where it is localized predominantly in the outer root sheath.

Mouse Krt6a Antibody(Center) - Protocols

Provided below are standard protocols that you may find useful for product applications.

- [Western Blot](#)
- [Blocking Peptides](#)
- [Dot Blot](#)
- [Immunohistochemistry](#)
- [Immunofluorescence](#)
- [Immunoprecipitation](#)
- [Flow Cytometry](#)
- [Cell Culture](#)

Mouse Krt6a Antibody(Center) - Images



Mouse Krt6a Antibody (Center) (Cat. #AP19689c) western blot analysis in mouse bladder tissue lysates (35ug/lane). This demonstrates the Mouse Krt6a antibody detected the Mouse Krt6a protein (arrow).

Mouse Krt6a Antibody(Center) - Background

Keratins 6 and 16 are expressed in keratinocytes, which are undergoing rapid turnover in the suprabasal region (also known as hyperproliferation related keratins). Keratin 6 is found in hair follicles, neck squamous cell carcinomas, suprabasal cells of a variety of internal stratified epithelia, in epidermis, in both normal and hyperproliferative situations. Epidermal injury results in activation of keratinocytes which express CK6 and CK16. CK6 is strongly expressed in about 75% of head and neck squamous cell carcinomas. Expression of CK6 is particularly associated with differentiation. There are at least six isoforms of human type II keratin 6 (K6), K6A being the most abundant representing about 77% of all forms found in epithelia.

Mouse Krt6a Antibody(Center) - References

- Sehic, A., et al. Eur. J. Oral Sci. 117(2):93-104(2009)
Chen, J., et al. J. Invest. Dermatol. 128(2):270-279(2008)
Cui, C.Y., et al. Hum. Mol. Genet. 16(21):2583-2590(2007)
Gu, L.H., et al. J. Invest. Dermatol. 127(5):1061-1073(2007)
Kurek, D., et al. Development 134(2):261-272(2007)