

ZC3HAV1L Antibody(C-term)
Affinity Purified Rabbit Polyclonal Antibody (Pab)
Catalog # AP19737b**Specification**

ZC3HAV1L Antibody(C-term) - Product Information

Application	WB,E
Primary Accession	O96H79
Other Accession	NP_542391.2
Reactivity	Human
Host	Rabbit
Clonality	Polyclonal
Isotype	Rabbit IgG
Calculated MW	32962
Antigen Region	226-254

ZC3HAV1L Antibody(C-term) - Additional Information**Gene ID** 92092**Other Names**

Zinc finger CCCH-type antiviral protein 1-like, ZC3HAV1L, C7orf39

Target/Specificity

This ZC3HAV1L antibody is generated from rabbits immunized with a KLH conjugated synthetic peptide between 226-254 amino acids from the C-terminal region of human ZC3HAV1L.

Dilution

WB~~1:1000

E~~Use at an assay dependent concentration.

Format

Purified polyclonal antibody supplied in PBS with 0.09% (W/V) sodium azide. This antibody is purified through a protein A column, followed by peptide affinity purification.

Storage

Maintain refrigerated at 2-8°C for up to 2 weeks. For long term storage store at -20°C in small aliquots to prevent freeze-thaw cycles.

Precautions

ZC3HAV1L Antibody(C-term) is for research use only and not for use in diagnostic or therapeutic procedures.

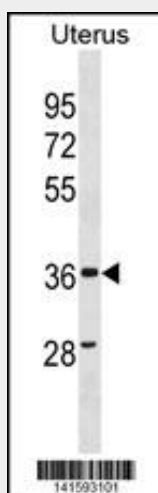
ZC3HAV1L Antibody(C-term) - Protein Information**Name** ZC3HAV1L**Synonyms** C7orf39

ZC3HAV1L Antibody(C-term) - Protocols

Provided below are standard protocols that you may find useful for product applications.

- [Western Blot](#)
- [Blocking Peptides](#)
- [Dot Blot](#)
- [Immunohistochemistry](#)
- [Immunofluorescence](#)
- [Immunoprecipitation](#)
- [Flow Cytometry](#)
- [Cell Culture](#)

ZC3HAV1L Antibody(C-term) - Images



ZC3HAV1L Antibody (C-term) (Cat. #AP19737b) western blot analysis in human Uterus tissue lysates (35ug/lane). This demonstrates the ZC3HAV1L antibody detected the ZC3HAV1L protein (arrow).

ZC3HAV1L Antibody(C-term) - Background

The function of this protein is unknown.