

ENPP1 Antibody(N-term)
Affinity Purified Rabbit Polyclonal Antibody (Pab)
Catalog # AP19744A

Specification

ENPP1 Antibody(N-term) - Product Information

Application	WB,E
Primary Accession	P22413
Other Accession	NP_006199.2
Reactivity	Human
Host	Rabbit
Clonality	Polyclonal
Isotype	Rabbit IgG
Calculated MW	104924
Antigen Region	6-34

ENPP1 Antibody(N-term) - Additional Information

Gene ID 5167

Other Names

Ectonucleotide pyrophosphatase/phosphodiesterase family member 1, E-NPP 1, Membrane component chromosome 6 surface marker 1, Phosphodiesterase I/nucleotide pyrophosphatase 1, Plasma-cell membrane glycoprotein PC-1, Alkaline phosphodiesterase I, Nucleotide pyrophosphatase, NPPase, ENPP1, M6S1, NPPS, PC1, PDNP1

Target/Specificity

This ENPP1 antibody is generated from rabbits immunized with a KLH conjugated synthetic peptide between 6-34 amino acids from the N-terminal region of human ENPP1.

Dilution

WB~~1:1000

E~~Use at an assay dependent concentration.

Format

Purified polyclonal antibody supplied in PBS with 0.09% (W/V) sodium azide. This antibody is purified through a protein A column, followed by peptide affinity purification.

Storage

Maintain refrigerated at 2-8°C for up to 2 weeks. For long term storage store at -20°C in small aliquots to prevent freeze-thaw cycles.

Precautions

ENPP1 Antibody(N-term) is for research use only and not for use in diagnostic or therapeutic procedures.

ENPP1 Antibody(N-term) - Protein Information

Name ENPP1 ([HGNC:3356](#))

Function Nucleotide pyrophosphatase that generates diphosphate (PPi) and functions in bone mineralization and soft tissue calcification by regulating pyrophosphate levels (By similarity). PPi inhibits bone mineralization and soft tissue calcification by binding to nascent hydroxyapatite crystals, thereby preventing further growth of these crystals (PubMed:[11004006](#)). Preferentially hydrolyzes ATP, but can also hydrolyze other nucleoside 5' triphosphates such as GTP, CTP and UTP to their corresponding monophosphates with release of pyrophosphate, as well as diadenosine polyphosphates, and also 3',5'-cAMP to AMP (PubMed:[25344812](#), PubMed:[27467858](#), PubMed:[28011303](#), PubMed:[35147247](#), PubMed:[8001561](#)). May also be involved in the regulation of the availability of nucleotide sugars in the endoplasmic reticulum and Golgi, and the regulation of purinergic signaling (PubMed:[27467858](#), PubMed:[8001561](#)). Inhibits ectopic joint calcification and maintains articular chondrocytes by repressing hedgehog signaling; it is however unclear whether hedgehog inhibition is direct or indirect (By similarity). Appears to modulate insulin sensitivity and function (PubMed:[10615944](#)). Also involved in melanogenesis (PubMed:[28964717](#)). Also able to hydrolyze 2',3'-cGAMP (cyclic GMP-AMP), a second messenger that activates TMEM173/STING and triggers type-I interferon production (PubMed:[25344812](#)). 2',3'-cGAMP degradation takes place in the lumen or extracellular space, and not in the cytosol where it is produced; the role of 2',3'-cGAMP hydrolysis is therefore unclear (PubMed:[25344812](#)). Not able to hydrolyze the 2',3'-cGAMP linkage isomer 3'-3'-cGAMP (PubMed:[25344812](#)).

Cellular Location

[Ectonucleotide pyrophosphatase/phosphodiesterase family member 1]: Cell membrane; Single-pass type II membrane protein. Basolateral cell membrane; Single-pass type II membrane protein Note=Targeted to the basolateral membrane in polarized epithelial cells and in hepatocytes, and to matrix vesicles in osteoblasts (PubMed:11598187). In bile duct cells and cancer cells, located to the apical cytoplasmic side (PubMed:11598187)

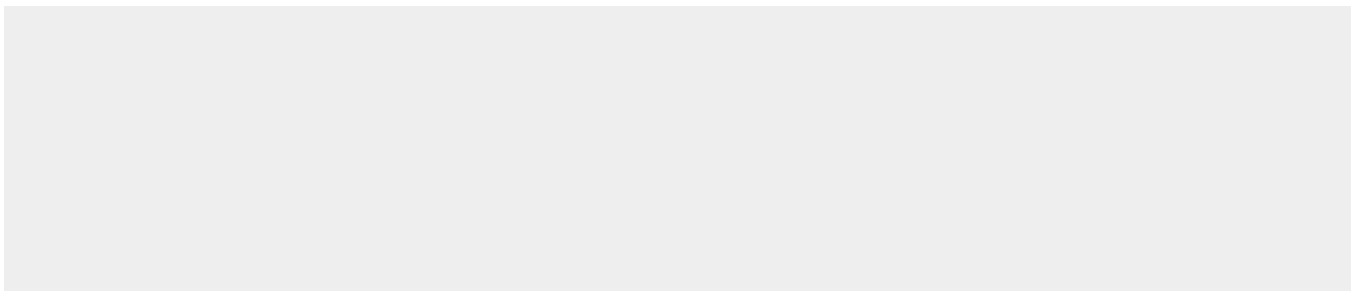
Tissue Location

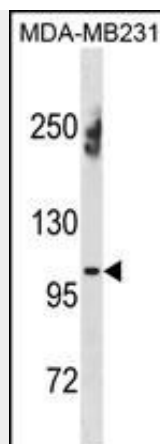
Expressed in plasma cells and also in a number of non-lymphoid tissues, including the distal convoluted tubule of the kidney, chondrocytes and epididymis (PubMed:9344668). Expressed in melanocytes but not in keratinocytes (PubMed:28964717)

ENPP1 Antibody(N-term) - Protocols

Provided below are standard protocols that you may find useful for product applications.

- [Western Blot](#)
- [Blocking Peptides](#)
- [Dot Blot](#)
- [Immunohistochemistry](#)
- [Immunofluorescence](#)
- [Immunoprecipitation](#)
- [Flow Cytometry](#)
- [Cell Culture](#)

ENPP1 Antibody(N-term) - Images



ENPP1 Antibody (N-term) (Cat. #AP19744a) western blot analysis in MDA-MB231 cell line lysates (35ug/lane). This demonstrates the ENPP1 antibody detected the ENPP1 protein (arrow).

ENPP1 Antibody(N-term) - Background

This gene is a member of the ecto-nucleotide pyrophosphatase/phosphodiesterase (ENPP) family. The encoded protein is a type II transmembrane glycoprotein comprising two identical disulfide-bonded subunits. This protein has broad specificity and cleaves a variety of substrates, including phosphodiester bonds of nucleotides and nucleotide sugars and pyrophosphate bonds of nucleotides and nucleotide sugars. This protein may function to hydrolyze nucleoside 5' triphosphates to their corresponding monophosphates and may also hydrolyze diadenosine polyphosphates. Mutations in this gene have been associated with 'idiopathic' infantile arterial calcification, ossification of the posterior longitudinal ligament of the spine (OPLL), and insulin resistance.

ENPP1 Antibody(N-term) - References

Ermakov, S., et al. Ann. Hum. Biol. 37(6):754-766(2010)
Bailey, S.D., et al. Diabetes Care 33(10):2250-2253(2010)
Wang, M., et al. Yi Chuan 32(8):808-816(2010)
Cruz, M., et al. Diabetes Metab. Res. Rev. 26(4):261-270(2010)
Moehlecke, M., et al. Arq. Bras. Cardiol. 94(2):157-161(2010)