

C8B Antibody (C-term)
Affinity Purified Rabbit Polyclonal Antibody (Pab)
Catalog # AP19757b**Specification**

C8B Antibody (C-term) - Product Information

Application	WB,E
Primary Accession	P07358
Other Accession	NP_000057.1
Reactivity	Human
Host	Rabbit
Clonality	Polyclonal
Isotype	Rabbit IgG
Calculated MW	66948
Antigen Region	393-422

C8B Antibody (C-term) - Additional Information**Gene ID** 732**Other Names**

Complement component C8 beta chain, Complement component 8 subunit beta, C8B

Target/Specificity

This C8B antibody is generated from rabbits immunized with a KLH conjugated synthetic peptide between 393-422 amino acids from the C-terminal region of human C8B.

Dilution

WB~~1:1000

Format

Purified polyclonal antibody supplied in PBS with 0.09% (W/V) sodium azide. This antibody is purified through a protein A column, followed by peptide affinity purification.

Storage

Maintain refrigerated at 2-8°C for up to 2 weeks. For long term storage store at -20°C in small aliquots to prevent freeze-thaw cycles.

Precautions

C8B Antibody (C-term) is for research use only and not for use in diagnostic or therapeutic procedures.

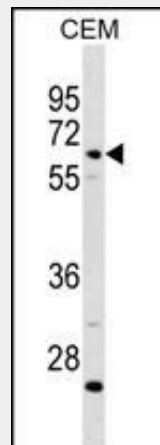
C8B Antibody (C-term) - Protein Information**Name** C8B

Function Constituent of the membrane attack complex (MAC) that plays a key role in the innate and adaptive immune response by forming pores in the plasma membrane of target cells.

Cellular Location
Secreted.**C8B Antibody (C-term) - Protocols**

Provided below are standard protocols that you may find useful for product applications.

- [Western Blot](#)
- [Blocking Peptides](#)
- [Dot Blot](#)
- [Immunohistochemistry](#)
- [Immunofluorescence](#)
- [Immunoprecipitation](#)
- [Flow Cytometry](#)
- [Cell Culture](#)

C8B Antibody (C-term) - Images

C8B Antibody (C-term) (Cat. #AP19757b) western blot analysis in CEM cell line lysates (35ug/lane). This demonstrates the C8B antibody detected the C8B protein (arrow).

C8B Antibody (C-term) - Background

C8 beta is one of the three subunits that comprise the component 8 (C8) of the complement system. C8 participates in the formation of Membrane Attack Complex that results in the lysis of cells. Patients with C8B deficiency are prone to bacteria infection.

C8B Antibody (C-term) - References

Han, S., et al. Hum. Immunol. 71(7):727-730(2010)
Rajaraman, P., et al. Cancer Epidemiol. Biomarkers Prev. 19(5):1356-1361(2010)
Davila, S., et al. Genes Immun. 11(3):232-238(2010)
Gancz, D., et al. Mol. Immunol. 47 (2-3), 310-317 (2009) :
Rajaraman, P., et al. Cancer Epidemiol. Biomarkers Prev. 18(5):1651-1658(2009)