

**BMP8A Antibody (C-term)**  
**Affinity Purified Rabbit Polyclonal Antibody (Pab)**  
**Catalog # AP19760b****Specification**

---

**BMP8A Antibody (C-term) - Product Information**

Application	WB,E
Primary Accession	<a href="#">Q7Z5Y6</a>
Other Accession	<a href="#">NP_861525.2</a>
Reactivity	Human
Host	Rabbit
Clonality	Polyclonal
Isotype	Rabbit IgG
Calculated MW	44798
Antigen Region	271-298

**BMP8A Antibody (C-term) - Additional Information****Gene ID** 353500**Other Names**

Bone morphogenetic protein 8A, BMP-8A, BMP8A

**Target/Specificity**

This BMP8A antibody is generated from rabbits immunized with a KLH conjugated synthetic peptide between 271-298 amino acids from the C-terminal region of human BMP8A.

**Dilution**

WB~~1:1000

**Format**

Purified polyclonal antibody supplied in PBS with 0.09% (W/V) sodium azide. This antibody is purified through a protein A column, followed by peptide affinity purification.

**Storage**

Maintain refrigerated at 2-8°C for up to 2 weeks. For long term storage store at -20°C in small aliquots to prevent freeze-thaw cycles.

**Precautions**

BMP8A Antibody (C-term) is for research use only and not for use in diagnostic or therapeutic procedures.

**BMP8A Antibody (C-term) - Protein Information****Name** BMP8A

**Function** Induces cartilage and bone formation. May be the osteoinductive factor responsible for the phenomenon of epithelial osteogenesis. Plays a role in calcium regulation and bone

homeostasis (By similarity). Signaling protein involved in regulation of thermogenesis and energy balance. Proposed to increase the peripheral response of brown adipose tissue (BAT) to adrenergic stimulation while acting centrally in the hypothalamus to increase sympathetic output to BAT.

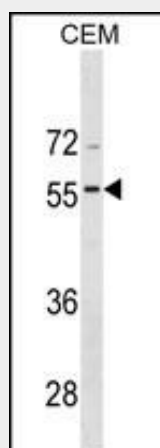
**Cellular Location**  
Secreted.

### **BMP8A Antibody (C-term) - Protocols**

Provided below are standard protocols that you may find useful for product applications.

- [Western Blot](#)
- [Blocking Peptides](#)
- [Dot Blot](#)
- [Immunohistochemistry](#)
- [Immunofluorescence](#)
- [Immunoprecipitation](#)
- [Flow Cytometry](#)
- [Cell Culture](#)

### **BMP8A Antibody (C-term) - Images**



BMP8A Antibody (C-term) (Cat. #AP19760b) western blot analysis in CEM cell line lysates (35ug/lane). This demonstrates the BMP8A antibody detected the BMP8A protein (arrow).

### **BMP8A Antibody (C-term) - Background**

Induces cartilage and bone formation. May be the osteoinductive factor responsible for the phenomenon of epithelial osteogenesis. Plays a role in calcium regulation and bone homeostasis (By similarity).

### **BMP8A Antibody (C-term) - References**

Davila, S., et al. Genes Immun. 11(3):232-238(2010)  
Yokoyama, K., et al. Nephron Clin Pract 115 (4), C237-C243 (2010) :