

**PRRX2 Antibody (C-term)**  
**Affinity Purified Rabbit Polyclonal Antibody (Pab)**  
**Catalog # AP19763b**

**Specification**

---

**PRRX2 Antibody (C-term) - Product Information**

Application	WB,E
Primary Accession	<a href="#">O99811</a>
Other Accession	<a href="#">O06348</a> , <a href="#">NP_057391.1</a>
Reactivity	Mouse
Host	Rabbit
Clonality	Polyclonal
Isotype	Rabbit IgG
Calculated MW	27079
Antigen Region	223-250

**PRRX2 Antibody (C-term) - Additional Information**

**Gene ID** 51450

**Other Names**

Paired mesoderm homeobox protein 2, Paired-related homeobox protein 2, PRX-2, PRRX2, PMX2, PRX2

**Target/Specificity**

This PRRX2 antibody is generated from rabbits immunized with a KLH conjugated synthetic peptide between 223-250 amino acids from the C-terminal region of human PRRX2.

**Dilution**

WB~~1:1000

**Format**

Purified polyclonal antibody supplied in PBS with 0.09% (W/V) sodium azide. This antibody is purified through a protein A column, followed by peptide affinity purification.

**Storage**

Maintain refrigerated at 2-8°C for up to 2 weeks. For long term storage store at -20°C in small aliquots to prevent freeze-thaw cycles.

**Precautions**

PRRX2 Antibody (C-term) is for research use only and not for use in diagnostic or therapeutic procedures.

**PRRX2 Antibody (C-term) - Protein Information**

**Name** PRRX2

**Synonyms** PMX2, PRX2

**Function** May play a role in the scarless healing of cutaneous wounds during the first two trimesters of development.

**Cellular Location**

Nucleus {ECO:0000255|PROSITE-ProRule:PRU00108, ECO:0000255|PROSITE-ProRule:PRU00138}

**Tissue Location**

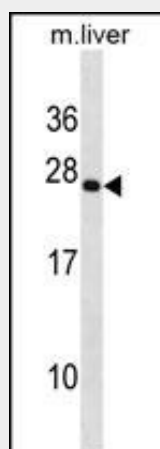
In fetal skin, highest expression found in cells of mesodermal origin within the dermal papilla of the developing hair shaft. Not detected in epidermis or dermis. In adult skin, weakly expressed within the basal layers of the epidermis. Not expressed in dermis.

**PRRX2 Antibody (C-term) - Protocols**

Provided below are standard protocols that you may find useful for product applications.

- [Western Blot](#)
- [Blocking Peptides](#)
- [Dot Blot](#)
- [Immunohistochemistry](#)
- [Immunofluorescence](#)
- [Immunoprecipitation](#)
- [Flow Cytometry](#)
- [Cell Culture](#)

**PRRX2 Antibody (C-term) - Images**



PRRX2 Antibody (C-term) (Cat. #AP19763b) western blot analysis in mouse liver tissue lysates (35ug/lane). This demonstrates the PRRX2 antibody detected the PRRX2 protein (arrow).

**PRRX2 Antibody (C-term) - Background**

The DNA-associated protein encoded by this gene is a member of the paired family of homeobox proteins. Expression is localized to proliferating fetal fibroblasts and the developing dermal layer, with downregulated expression in adult skin. Increases in expression of this gene during fetal but not adult wound healing suggest a possible role in mechanisms that control mammalian dermal regeneration and prevent formation of scar response to wounding. The expression patterns provide evidence consistent with a role in fetal skin development and a possible

role in cellular proliferation.

#### **PRRX2 Antibody (C-term) - References**

Jugessur, A., et al. PLoS ONE 5 (7), E11493 (2010) :  
Eriksson, N., et al. PLoS Genet. 6 (6), E1000993 (2010) :  
Tokutomi, Y., et al. Biochem. Biophys. Res. Commun. 364(4):822-830(2007)  
Wissmuller, S., et al. Nucleic Acids Res. 34(6):1735-1744(2006)  
Gervais, C., et al. Leukemia 19(1):145-148(2005)