

ARHGEF16 Antibody (N-term)
Affinity Purified Rabbit Polyclonal Antibody (Pab)
Catalog # AP19783A**Specification**

ARHGEF16 Antibody (N-term) - Product Information

Application	WB,E
Primary Accession	Q5VV41
Other Accession	NP_055263.2
Reactivity	Mouse
Host	Rabbit
Clonality	Polyclonal
Isotype	Rabbit IgG
Calculated MW	80105
Antigen Region	187-214

ARHGEF16 Antibody (N-term) - Additional Information**Gene ID** 27237**Other Names**

Rho guanine nucleotide exchange factor 16, Ephexin-4, ARHGEF16, EPHEXIN4, NBR

Target/Specificity

This ARHGEF16 antibody is generated from rabbits immunized with a KLH conjugated synthetic peptide between 187-214 amino acids from the N-terminal region of human ARHGEF16.

Dilution

WB~~1:1000

E~~Use at an assay dependent concentration.

Format

Purified polyclonal antibody supplied in PBS with 0.09% (W/V) sodium azide. This antibody is purified through a protein A column, followed by peptide affinity purification.

Storage

Maintain refrigerated at 2-8°C for up to 2 weeks. For long term storage store at -20°C in small aliquots to prevent freeze-thaw cycles.

Precautions

ARHGEF16 Antibody (N-term) is for research use only and not for use in diagnostic or therapeutic procedures.

ARHGEF16 Antibody (N-term) - Protein Information**Name** ARHGEF16**Synonyms** EPHEXIN4, NBR

Function Guanyl-nucleotide exchange factor of the RHOG GTPase stimulating the exchange of RHOG-associated GDP for GTP. May play a role in chemotactic cell migration by mediating the activation of RAC1 by EPHA2. May also activate CDC42 and mediate activation of CDC42 by the viral protein HPV16 E6.

Cellular Location

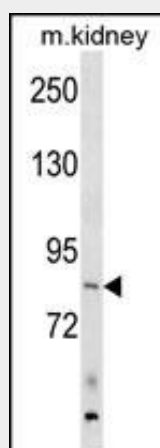
Cytoplasm.

ARHGEF16 Antibody (N-term) - Protocols

Provided below are standard protocols that you may find useful for product applications.

- [Western Blot](#)
- [Blocking Peptides](#)
- [Dot Blot](#)
- [Immunohistochemistry](#)
- [Immunofluorescence](#)
- [Immunoprecipitation](#)
- [Flow Cytometry](#)
- [Cell Culture](#)

ARHGEF16 Antibody (N-term) - Images



ARHGEF16 Antibody (N-term) (Cat. #AP19783a) western blot analysis in mouse kidney tissue lysates (35ug/lane). This demonstrates the ARHGEF16 antibody detected the ARHGEF16 protein (arrow).

ARHGEF16 Antibody (N-term) - Background

Although the specific function of this protein is not known yet, it is thought to be involved in protein-protein and protein-lipid interactions.

ARHGEF16 Antibody (N-term) - References

Hiramoto-Yamaki, N., et al. J. Cell Biol. 190(3):461-477(2010)
Takefuji, M., et al. J. Hum. Genet. 55(1):42-49(2010)
Barber, M.J., et al. PLoS ONE 5 (3), E9763 (2010) :
Rabizadeh, S., et al. Cytokine Growth Factor Rev. 14 (3-4), 225-239 (2003) :
Salehi, A.H., et al. J. Biol. Chem. 277(50):48043-48050(2002)