

Mouse Lrmp Antibody (C-term)
Affinity Purified Rabbit Polyclonal Antibody (Pab)
Catalog # AP19787b

Specification

Mouse Lrmp Antibody (C-term) - Product Information

Application	WB,E
Primary Accession	Q60664
Reactivity	Mouse
Host	Rabbit
Clonality	Polyclonal
Isotype	Rabbit IgG
Antigen Region	403-431

Mouse Lrmp Antibody (C-term) - Additional Information

Gene ID 16970

Other Names

Lymphoid-restricted membrane protein, Protein Jaw1, Processed lymphoid-restricted membrane protein, Lrmp, Jaw1

Target/Specificity

This Mouse Lrmp antibody is generated from rabbits immunized with a KLH conjugated synthetic peptide between 403-431 amino acids from the C-terminal region of mouse Lrmp.

Dilution

WB~~1:1000

E~~Use at an assay dependent concentration.

Format

Purified polyclonal antibody supplied in PBS with 0.09% (W/V) sodium azide. This antibody is purified through a protein A column, followed by peptide affinity purification.

Storage

Maintain refrigerated at 2-8°C for up to 2 weeks. For long term storage store at -20°C in small aliquots to prevent freeze-thaw cycles.

Precautions

Mouse Lrmp Antibody (C-term) is for research use only and not for use in diagnostic or therapeutic procedures.

Mouse Lrmp Antibody (C-term) - Protein Information

Name Irag2

Function Plays a role in the delivery of peptides to major histocompatibility complex (MHC) class I molecules; this occurs in a transporter associated with antigen processing (TAP)-independent

manner. May play a role in taste signal transduction via ITPR3. May play a role during fertilization in pronucleus congression and fusion (PubMed:[9314557](#)). Plays a role in maintaining nuclear shape, maybe as a component of the LINC complex and through interaction with microtubules (PubMed:[29878215](#)). Plays a role in the regulation of cellular excitability by regulating the hyperpolarization-activated cyclic nucleotide-gated HCN4 channel activity (PubMed:[32647060](#)).

Cellular Location

[Processed inositol 1,4,5-triphosphate receptor associated 2]: Cytoplasm

Tissue Location

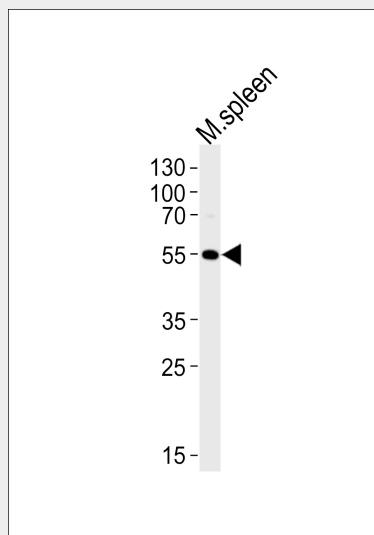
Spleen and thymus. Expressed at high levels in pre B-cells, mature B-cells and pre T-cells. Expressed at low levels in mature T-cells and plasma B-cells. Expressed in circumvallate (CV), foliate (FL) and fungiform (FF) taste papillae cells of the tongue epithelium.

Mouse Lrmp Antibody (C-term) - Protocols

Provided below are standard protocols that you may find useful for product applications.

- [Western Blot](#)
- [Blocking Peptides](#)
- [Dot Blot](#)
- [Immunohistochemistry](#)
- [Immunofluorescence](#)
- [Immunoprecipitation](#)
- [Flow Cytometry](#)
- [Cell Culture](#)

Mouse Lrmp Antibody (C-term) - Images



Western blot analysis of lysate from mouse spleen tissue lysate, using Mouse Lrmp Antibody (C-term)(Cat. #AP19787b). AP19787b was diluted at 1:1000 at each lane. A goat anti-rabbit IgG H&L(HRP) at 1:5000 dilution was used as the secondary antibody. Lysate at 35ug per lane.

Mouse Lrmp Antibody (C-term) - Background

The function of this protein is unknown.