

CBWD6 Antibody(Center)
Affinity Purified Rabbit Polyclonal Antibody (Pab)
Catalog # AP19798c**Specification**

CBWD6 Antibody(Center) - Product Information

Application	WB,E
Primary Accession	Q4V339
Other Accession	NP_001078926.1
Reactivity	Human
Host	Rabbit
Clonality	Polyclonal
Isotype	Rabbit IgG
Calculated MW	43964
Antigen Region	193-221

CBWD6 Antibody(Center) - Additional Information**Gene ID** 644019**Other Names**

COBW domain-containing protein 6, Cobalamin synthase W domain-containing protein 6, CBWD6

Target/Specificity

This CBWD6 antibody is generated from rabbits immunized with a KLH conjugated synthetic peptide between 193-221 amino acids from the Central region of human CBWD6.

Dilution

WB~~1:1000

Format

Purified polyclonal antibody supplied in PBS with 0.09% (W/V) sodium azide. This antibody is purified through a protein A column, followed by peptide affinity purification.

Storage

Maintain refrigerated at 2-8°C for up to 2 weeks. For long term storage store at -20°C in small aliquots to prevent freeze-thaw cycles.

Precautions

CBWD6 Antibody(Center) is for research use only and not for use in diagnostic or therapeutic procedures.

CBWD6 Antibody(Center) - Protein Information**Name** ZNG1F ([HGNC:31978](#))

Function Zinc chaperone that directly transfers zinc cofactor to target metalloproteins, thereby activating them (By similarity). Catalyzes zinc insertion into the active site of methionine

aminopeptidase METAP1, which function to cleave the initiator methionine from polypeptides during or after protein translation (PubMed:[35584702](#)). Mechanistically, the N-terminal psi-PxLVp motif binds to the C6H2-type zinc finger of inactive form of METAP1 (By similarity). After formation of the docked complex, zinc is transferred from the CXCC motif in the GTPase domain of ZNG1F to the zinc binding site in the peptidase domain of METAP1 in a process requiring GTP hydrolysis (By similarity). GTP/GDP exchange is required for release of active METAP1 (By similarity).

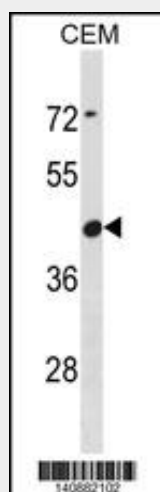
Cellular Location

Nucleus {ECO:0000250|UniProtKB:Q8VEH6}.

CBWD6 Antibody(Center) - Protocols

Provided below are standard protocols that you may find useful for product applications.

- [Western Blot](#)
- [Blocking Peptides](#)
- [Dot Blot](#)
- [Immunohistochemistry](#)
- [Immunofluorescence](#)
- [Immunoprecipitation](#)
- [Flow Cytometry](#)
- [Cell Culture](#)

CBWD6 Antibody(Center) - Images

CBWD6 Antibody (Center) (Cat. #AP19798c) western blot analysis in CEM cell line lysates (35ug/lane). This demonstrates the CBWD6 antibody detected the CBWD6 protein (arrow).

CBWD6 Antibody(Center) - Background

The function of this protein is unknown.

CBWD6 Antibody(Center) - References

Strausberg, R.L., et al. Proc. Natl. Acad. Sci. U.S.A. 99(26):16899-16903(2002)