

**GAPT Antibody(Center)**  
**Affinity Purified Rabbit Polyclonal Antibody (Pab)**  
**Catalog # AP19800C****Specification**

---

**GAPT Antibody(Center) - Product Information**

Application	WB,E
Primary Accession	<a href="#">Q8N292</a>
Other Accession	<a href="#">NP_689900.1</a>
Reactivity	Human
Host	Rabbit
Clonality	Polyclonal
Isotype	Rabbit IgG
Calculated MW	17883
Antigen Region	84-112

**GAPT Antibody(Center) - Additional Information****Gene ID** 202309**Other Names**

Protein GAPT, Growth factor receptor-bound protein 2-binding adapter protein, transmembrane, GAPT, C5orf29

**Target/Specificity**

This GAPT antibody is generated from rabbits immunized with a KLH conjugated synthetic peptide between 84-112 amino acids from the Central region of human GAPT.

**Dilution**

WB~~1:1000

E~~Use at an assay dependent concentration.

**Format**

Purified polyclonal antibody supplied in PBS with 0.09% (W/V) sodium azide. This antibody is purified through a protein A column, followed by peptide affinity purification.

**Storage**

Maintain refrigerated at 2-8°C for up to 2 weeks. For long term storage store at -20°C in small aliquots to prevent freeze-thaw cycles.

**Precautions**

GAPT Antibody(Center) is for research use only and not for use in diagnostic or therapeutic procedures.

**GAPT Antibody(Center) - Protein Information****Name** GAPT

**Synonyms** C5orf29

**Function** Negatively regulates B-cell proliferation following stimulation through the B-cell receptor. May play an important role in maintenance of marginal zone (MZ) B-cells (By similarity).

**Cellular Location**

Cell membrane; Single-pass membrane protein

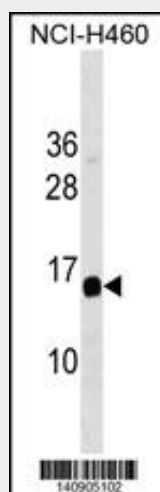
**Tissue Location**

Highly expressed in spleen and PBL, detected at lower levels in thymus, and undetectable in all other tissues tested Also expressed in various B-cell lines, monocytic cell line THP-1 and NK-like cell line YT, but not in T-cell line Jurkat or HeLa cells

**GAPT Antibody(Center) - Protocols**

Provided below are standard protocols that you may find useful for product applications.

- [Western Blot](#)
- [Blocking Peptides](#)
- [Dot Blot](#)
- [Immunohistochemistry](#)
- [Immunofluorescence](#)
- [Immunoprecipitation](#)
- [Flow Cytometry](#)
- [Cell Culture](#)

**GAPT Antibody(Center) - Images**

GAPT Antibody (Center) (Cat. #AP19800c) western blot analysis in NCI-H460 cell line lysates (35ug/lane). This demonstrates the GAPT antibody detected the GAPT protein (arrow).

**GAPT Antibody(Center) - Background**

Negatively regulates B-cell proliferation following stimulation through the B-cell receptor. May play an important role in maintenance of marginal zone (MZ) B-cells (By similarity).

**GAPT Antibody(Center) - References**

Gerhard, D.S., et al. Genome Res. 14 (10B), 2121-2127 (2004) :