

KRT72 Antibody(Center)
Affinity Purified Rabbit Polyclonal Antibody (Pab)
Catalog # AP19811c**Specification**

KRT72 Antibody(Center) - Product Information

Application	WB,E
Primary Accession	O14CN4
Other Accession	O148H8 , NP_542785.1
Reactivity	Human
Predicted	Bovine
Host	Rabbit
Clonality	Polyclonal
Isotype	Rabbit IgG
Calculated MW	55877
Antigen Region	313-342

KRT72 Antibody(Center) - Additional Information**Gene ID** 140807**Other Names**

Keratin, type II cytoskeletal 72, Cytokeratin-72, CK-72, Keratin-72, K72, Type II inner root sheath-specific keratin-K6irs2, Type-II keratin Kb35, KRT72, K6IRS2, KB35, KRT6, KRT6IRS2

Target/Specificity

This KRT72 antibody is generated from rabbits immunized with a KLH conjugated synthetic peptide between 313-342 amino acids from the Central region of human KRT72.

Dilution

WB~~1:1000

E~~Use at an assay dependent concentration.

Format

Purified polyclonal antibody supplied in PBS with 0.09% (W/V) sodium azide. This antibody is purified through a protein A column, followed by peptide affinity purification.

Storage

Maintain refrigerated at 2-8°C for up to 2 weeks. For long term storage store at -20°C in small aliquots to prevent freeze-thaw cycles.

Precautions

KRT72 Antibody(Center) is for research use only and not for use in diagnostic or therapeutic procedures.

KRT72 Antibody(Center) - Protein Information**Name** KRT72

Synonyms K6IRS2, KB35, KRT6, KRT6IRS2

Function Has a role in hair formation. Specific component of keratin intermediate filaments in the inner root sheath (IRS) of the hair follicle (Probable).

Tissue Location

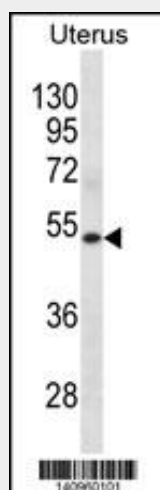
Highly expressed in hair follicles from scalp and eyebrow. Also expressed in palmoplantar epidermis. Not expressed in face skin despite the presence of fine hairs histologically. In hair, it is specifically present in the inner root sheath (IRS) of the hair follicle. Present in the IRS cuticle, but not in Henle or Huxley layers of the IRS. In the IRS cuticle, its presence is delayed up to the height of the apex of the dermal papilla (at protein level)

KRT72 Antibody(Center) - Protocols

Provided below are standard protocols that you may find useful for product applications.

- [Western Blot](#)
- [Blocking Peptides](#)
- [Dot Blot](#)
- [Immunohistochemistry](#)
- [Immunofluorescence](#)
- [Immunoprecipitation](#)
- [Flow Cytometry](#)
- [Cell Culture](#)

KRT72 Antibody(Center) - Images



KRT72 Antibody (Center) (Cat. #AP19811c) western blot analysis in human Uterus tissue lysates (35ug/lane). This demonstrates the KRT72 antibody detected the KRT72 protein (arrow).

KRT72 Antibody(Center) - Background

Keratins are intermediate filament proteins responsible for the structural integrity of epithelial cells. The type II keratins consist of basic or neutral proteins which are arranged in pairs of heterotypic keratin chains coexpressed during differentiation of simple and stratified epithelial tissues. This gene encodes a type II keratin that is specifically expressed in the inner root sheath of hair follicles. The type II keratins are

clustered in a region of chromosome 12q12-q13. Multiple transcript variants encoding different isoforms have been found for this gene.

KRT72 Antibody(Center) - References

Bertheau, P., et al. PLoS Med. 4 (3), E90 (2007) :
Schweizer, J., et al. J. Cell Biol. 174(2):169-174(2006)
Langbein, L., et al. J. Invest. Dermatol. 120(4):512-522(2003)
Porter, R.M., et al. Br. J. Dermatol. 145(4):558-568(2001)