

BCL2 Antibody (Center)
Affinity Purified Rabbit Polyclonal Antibody (Pab)
Catalog # AP19821c**Specification**

BCL2 Antibody (Center) - Product Information

Application	WB,E
Primary Accession	P10415
Other Accession	P49950 , P10417 , Q9JJV8 , O02718 , NP_000624.2
Reactivity	Human
Predicted	Bovine, Hamster, Mouse, Rat
Host	Rabbit
Clonality	Polyclonal
Isotype	Rabbit IgG
Calculated MW	26266
Antigen Region	87-116

BCL2 Antibody (Center) - Additional Information**Gene ID** 596**Other Names**

Apoptosis regulator Bcl-2, BCL2

Target/Specificity

This BCL2 antibody is generated from rabbits immunized with a KLH conjugated synthetic peptide between 87-116 amino acids from the Central region of human BCL2.

Dilution

WB~~1:1000

E~~Use at an assay dependent concentration.

Format

Purified polyclonal antibody supplied in PBS with 0.09% (W/V) sodium azide. This antibody is purified through a protein A column, followed by peptide affinity purification.

Storage

Maintain refrigerated at 2-8°C for up to 2 weeks. For long term storage store at -20°C in small aliquots to prevent freeze-thaw cycles.

Precautions

BCL2 Antibody (Center) is for research use only and not for use in diagnostic or therapeutic procedures.

BCL2 Antibody (Center) - Protein Information**Name** BCL2

Function Suppresses apoptosis in a variety of cell systems including factor-dependent lymphohematopoietic and neural cells (PubMed:[1508712](#), PubMed:[8183370](#)). Regulates cell death by controlling the mitochondrial membrane permeability (PubMed:[11368354](#)). Appears to function in a feedback loop system with caspases (PubMed:[11368354](#)). Inhibits caspase activity either by preventing the release of cytochrome c from the mitochondria and/or by binding to the apoptosis-activating factor (APAF-1) (PubMed:[11368354](#)). Also acts as an inhibitor of autophagy: interacts with BECN1 and AMBRA1 during non-starvation conditions and inhibits their autophagy function (PubMed:[18570871](#), PubMed:[20889974](#), PubMed:[21358617](#)). May attenuate inflammation by impairing NLRP1- inflammasome activation, hence CASP1 activation and IL1B release (PubMed:[17418785](#)).

Cellular Location

Mitochondrion outer membrane; Single-pass membrane protein. Nucleus membrane; Single-pass membrane protein. Endoplasmic reticulum membrane; Single-pass membrane protein. Cytoplasm {ECO:0000250|UniProtKB:P10417}

Tissue Location

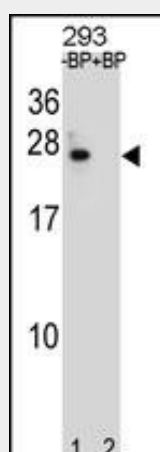
Expressed in a variety of tissues.

BCL2 Antibody (Center) - Protocols

Provided below are standard protocols that you may find useful for product applications.

- [Western Blot](#)
- [Blocking Peptides](#)
- [Dot Blot](#)
- [Immunohistochemistry](#)
- [Immunofluorescence](#)
- [Immunoprecipitation](#)
- [Flow Cytometry](#)
- [Cell Culture](#)

BCL2 Antibody (Center) - Images



BCL2 Antibody (Center) (Cat. #AP19821c) pre-incubated without(lane 1) and with(lane 2) blocking peptide in 293 cell line lysate. BCL2 Antibody (Center) (arrow) was detected using the purified Pab.

BCL2 Antibody (Center) - Background

This gene encodes an integral outer mitochondrial membrane protein that blocks the apoptotic death of some cells such as lymphocytes. Constitutive expression of BCL2, such as in the case of translocation of BCL2 to Ig heavy chain locus, is thought to be the cause of follicular lymphoma. Two transcript variants, produced by alternate splicing, differ in their C-terminal ends. [provided by RefSeq].

BCL2 Antibody (Center) - References

Feng, H., et al. Cancer Cell 18(4):353-366(2010)
Azad, N., et al. Ann. N. Y. Acad. Sci. 1203, 1-6 (2010) :
Dubikov, A.I., et al. Scand. J. Rheumatol. 39(5):368-372(2010)
Yu, B., et al. J. Exp. Clin. Cancer Res. 29, 107 (2010) :
Trisciuglio, D., et al. PLoS ONE 5 (7), E11772 (2010) :