

JUN Antibody (T243)
Affinity Purified Rabbit Polyclonal Antibody (Pab)
Catalog # AP1984g**Specification**

JUN Antibody (T243) - Product Information

Application	WB, IHC-P,E
Primary Accession	P05412
Other Accession	P17325 , P56432 , P05627 , P18870 , O77627
Reactivity	Human
Predicted	Bovine, Chicken, Mouse, Pig, Rat
Host	Rabbit
Clonality	Polyclonal
Isotype	Rabbit IgG
Calculated MW	35676
Antigen Region	221-250

JUN Antibody (T243) - Additional Information**Gene ID** 3725**Other Names**

Transcription factor AP-1, Activator protein 1, AP1, Proto-oncogene c-Jun, V-jun avian sarcoma virus 17 oncogene homolog, p39, JUN

Target/Specificity

This JUN antibody is generated from rabbits immunized with a KLH conjugated synthetic peptide between 221-250 amino acids from human JUN.

Dilution

WB~~1:1000

IHC-P~~1:10~50

E~~Use at an assay dependent concentration.

Format

Purified polyclonal antibody supplied in PBS with 0.09% (W/V) sodium azide. This antibody is purified through a protein A column, followed by peptide affinity purification.

Storage

Maintain refrigerated at 2-8°C for up to 2 weeks. For long term storage store at -20°C in small aliquots to prevent freeze-thaw cycles.

Precautions

JUN Antibody (T243) is for research use only and not for use in diagnostic or therapeutic procedures.

JUN Antibody (T243) - Protein Information

Name JUN

Function Transcription factor that recognizes and binds to the AP-1 consensus motif 5'-TGA[GC]TCA-3' (PubMed:[10995748](#), PubMed:[22083952](#)). Heterodimerizes with proteins of the FOS family to form an AP-1 transcription complex, thereby enhancing its DNA binding activity to the AP-1 consensus sequence 5'-TGA[GC]TCA-3' and enhancing its transcriptional activity (By similarity). Together with FOSB, plays a role in activation-induced cell death of T cells by binding to the AP-1 promoter site of FASLG/CD95L, and inducing its transcription in response to activation of the TCR/CD3 signaling pathway (PubMed:[12618758](#)). Promotes activity of NR5A1 when phosphorylated by HIPK3 leading to increased steroidogenic gene expression upon cAMP signaling pathway stimulation (PubMed:[17210646](#)). Involved in activated KRAS-mediated transcriptional activation of USP28 in colorectal cancer (CRC) cells (PubMed:[24623306](#)). Binds to the USP28 promoter in colorectal cancer (CRC) cells (PubMed:[24623306](#)).

Cellular Location

Nucleus.

Tissue Location

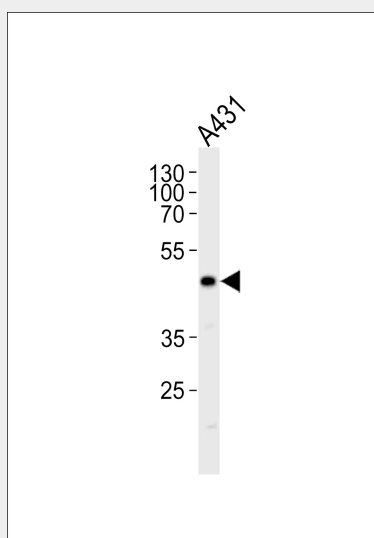
Expressed in the developing and adult prostate and prostate cancer cells.

JUN Antibody (T243) - Protocols

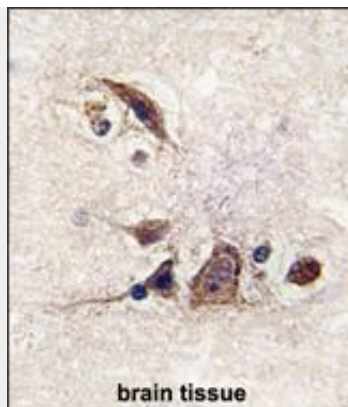
Provided below are standard protocols that you may find useful for product applications.

- [Western Blot](#)
- [Blocking Peptides](#)
- [Dot Blot](#)
- [Immunohistochemistry](#)
- [Immunofluorescence](#)
- [Immunoprecipitation](#)
- [Flow Cytometry](#)
- [Cell Culture](#)

JUN Antibody (T243) - Images



JUN Antibody (T243) (Cat. #AP1984g) western blot analysis in A431 cell line lysates (35ug/lane). This demonstrates the JUN antibody detected the JUN protein (arrow).



Formalin-fixed and paraffin-embedded human brain tissue reacted with JUN Antibody (S243) (Cat.#AP1984g), which was peroxidase-conjugated to the secondary antibody, followed by DAB staining. This data demonstrates the use of this antibody for immunohistochemistry; clinical relevance has not been evaluated.

JUN Antibody (T243) - Background

JUN interacts directly with specific target DNA sequences to regulate gene expression.

JUN Antibody (T243) - References

Fujita,S., J. Mol. Biol. 378 (3), 492-504 (2008)
Gan,X.Q., . Cell Biol. 180 (6), 1087-1100 (2008)
Yogev,O., Cancer Res. 68 (5), 1398-1406 (2008)