

**RBMY1A1 Antibody(C-term)**  
**Affinity Purified Rabbit Polyclonal Antibody (Pab)**  
**Catalog # AP19859b****Specification**

---

**RBMY1A1 Antibody(C-term) - Product Information**

Application	WB,E
Primary Accession	<a href="#">P0DJD3</a>
Other Accession	<a href="#">O15415</a> , <a href="#">A6NEO0</a> , <a href="#">POC7P1</a> , <a href="#">P0DJD4</a> , <a href="#">A6NDE4</a> , <a href="#">O15414</a> , <a href="#">NP_005049.1</a>
Reactivity	Human
Host	Rabbit
Clonality	Polyclonal
Isotype	Rabbit IgG
Calculated MW	55784
Antigen Region	468-496

**RBMY1A1 Antibody(C-term) - Additional Information****Gene ID** 5940**Other Names**

RNA-binding motif protein, Y chromosome, family 1 member A1, RNA-binding motif protein 1, RNA-binding motif protein 2, Y chromosome RNA recognition motif 1, hRBMY, RBMY1A1, RBM1, RBM2, YRRM1, YRRM2

**Target/Specificity**

This RBMY1A1 antibody is generated from rabbits immunized with a KLH conjugated synthetic peptide between 468-496 amino acids from the C-terminal region of human RBMY1A1.

**Dilution**

WB~~1:1000

E~~Use at an assay dependent concentration.

**Format**

Purified polyclonal antibody supplied in PBS with 0.09% (W/V) sodium azide. This antibody is purified through a protein A column, followed by peptide affinity purification.

**Storage**

Maintain refrigerated at 2-8°C for up to 2 weeks. For long term storage store at -20°C in small aliquots to prevent freeze-thaw cycles.

**Precautions**

RBMY1A1 Antibody(C-term) is for research use only and not for use in diagnostic or therapeutic procedures.

**RBMY1A1 Antibody(C-term) - Protein Information**

**Name** RBMY1A1

**Synonyms** RBM1, RBM2, YRRM1, YRRM2

**Function** RNA-binding protein involved in pre-mRNA splicing. Required for sperm development. Acts additively with TRA2B to promote exon 7 inclusion of the survival motor neuron SMN. Binds non-specifically to mRNAs.

**Cellular Location**

Nucleus.

**Tissue Location**

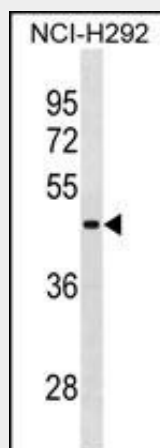
Testis-specific..

### **RBMY1A1 Antibody(C-term) - Protocols**

Provided below are standard protocols that you may find useful for product applications.

- [Western Blot](#)
- [Blocking Peptides](#)
- [Dot Blot](#)
- [Immunohistochemistry](#)
- [Immunofluorescence](#)
- [Immunoprecipitation](#)
- [Flow Cytometry](#)
- [Cell Culture](#)

### **RBMY1A1 Antibody(C-term) - Images**



RBMY1A1 Antibody (C-term) (Cat. #AP19859b) western blot analysis in NCI-H292 cell line lysates (35ug/lane). This demonstrates the RBMY1A1 antibody detected the RBMY1A1 protein (arrow).

### **RBMY1A1 Antibody(C-term) - Background**

This gene encodes a protein containing an RNA-binding motif in the N-terminus and four SRGY (serine, arginine, glycine, tyrosine) boxes in the C-terminus. Multiple copies of this gene are found in the AZFb azoospermia factor region of chromosome Y and the encoded protein is thought to be involved in spermatogenesis. Most copies of this locus are pseudogenes, although six highly similar

copies have full-length ORFs and are considered functional. Four functional copies of this gene are found within inverted repeat IR2; two functional copies of this gene are found in palindrome P3, along with two copies of PTPN13-like, Y-linked. [provided by RefSeq].

#### **RBMY1A1 Antibody(C-term) - References**

Dreumont, N., et al. J. Cell. Sci. 123 (PT 1), 40-50 (2010) :  
Liu, Y., et al. PLoS Genet. 5 (11), E1000707 (2009) :  
Lardone, M.C., et al. Mol. Hum. Reprod. 13(10):705-712(2007)  
Skrisovska, L., et al. EMBO Rep. 8(4):372-379(2007)  
Lavery, R., et al. Arch. Androl. 53(2):71-73(2007)