

KIRREL Antibody(C-term)
Affinity Purified Rabbit Polyclonal Antibody (Pab)
Catalog # AP19861b**Specification**

KIRREL Antibody(C-term) - Product Information

Application	WB,E
Primary Accession	O96J84
Other Accession	O6X936 , O80W68 , NP_060710.3
Reactivity	Human
Predicted	Mouse, Rat
Host	Rabbit
Clonality	Polyclonal
Isotype	Rabbit IgG
Calculated MW	83536
Antigen Region	505-534

KIRREL Antibody(C-term) - Additional Information**Gene ID** 55243**Other Names**

Kin of IRRE-like protein 1, Kin of irregular chiasm-like protein 1, Nephrin-like protein 1, KIRREL, KIRREL1, NEPH1

Target/Specificity

This KIRREL antibody is generated from rabbits immunized with a KLH conjugated synthetic peptide between 505-534 amino acids from the C-terminal region of human KIRREL.

Dilution

WB~~1:1000

Format

Purified polyclonal antibody supplied in PBS with 0.09% (W/V) sodium azide. This antibody is purified through a protein A column, followed by peptide affinity purification.

Storage

Maintain refrigerated at 2-8°C for up to 2 weeks. For long term storage store at -20°C in small aliquots to prevent freeze-thaw cycles.

Precautions

KIRREL Antibody(C-term) is for research use only and not for use in diagnostic or therapeutic procedures.

KIRREL Antibody(C-term) - Protein Information**Name** KIRREL1 ([HGNC:15734](#))

Synonyms KIRREL, NEPH1

Function Required for proper function of the glomerular filtration barrier. It is involved in the maintenance of a stable podocyte architecture with interdigitating foot processes connected by specialized cell-cell junctions, known as the slit diaphragm (PubMed:[31472902](#)). It is a signaling protein that needs the presence of TEC kinases to fully trans-activate the transcription factor AP-1 (By similarity).

Cellular Location

Cell membrane; Single-pass type I membrane protein. Note=Predominantly located at podocyte slit diaphragm

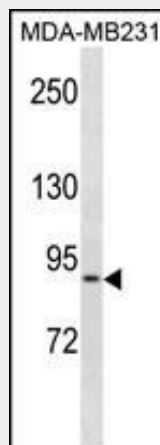
Tissue Location

Abundantly expressed in kidney. Specifically expressed in podocytes of kidney glomeruli

KIRREL Antibody(C-term) - Protocols

Provided below are standard protocols that you may find useful for product applications.

- [Western Blot](#)
- [Blocking Peptides](#)
- [Dot Blot](#)
- [Immunohistochemistry](#)
- [Immunofluorescence](#)
- [Immunoprecipitation](#)
- [Flow Cytometry](#)
- [Cell Culture](#)

KIRREL Antibody(C-term) - Images

KIRREL Antibody (C-term) (Cat. #AP19861b) western blot analysis in MDA-MB231 cell line lysates (35ug/lane). This demonstrates the KIRREL antibody detected the KIRREL protein (arrow).

KIRREL Antibody(C-term) - Background

NEPH1 is a member of the nephrin-like protein family, which includes NEPH2 (MIM 607761) and NEPH3 (MIM 607762). The cytoplasmic domains of these proteins interact with the C terminus of podocin (NPHS2; MIM 604766), and the genes are expressed in kidney podocytes, cells involved in ensuring size- and

charge-selective ultrafiltration (Sellin et al., 2003 [PubMed 12424224]).

KIRREL Antibody(C-term) - References

Machuca, E., et al. J. Am. Soc. Nephrol. 21(7):1209-1217(2010)
Wagner, M.C., et al. J. Biol. Chem. 283(51):35579-35589(2008)
Hartleben, B., et al. J. Biol. Chem. 283(34):23033-23038(2008)
Harita, Y., et al. J. Biol. Chem. 283(14):9177-9186(2008)
Ihalmo, P., et al. Diabetologia 51(1):86-90(2008)