

RNASE9 Antibody(C-term)
Affinity Purified Rabbit Polyclonal Antibody (Pab)
Catalog # AP19867b**Specification**

RNASE9 Antibody(C-term) - Product Information

Application	WB,E
Primary Accession	P60153
Other Accession	NP_001001673.2
Reactivity	Human
Host	Rabbit
Clonality	Polyclonal
Isotype	Rabbit IgG
Calculated MW	24307
Antigen Region	139-167

RNASE9 Antibody(C-term) - Additional Information**Gene ID** 390443**Other Names**

Inactive ribonuclease-like protein 9, RNASE9

Target/Specificity

This RNASE9 antibody is generated from rabbits immunized with a KLH conjugated synthetic peptide between 139-167 amino acids from the C-terminal region of human RNASE9.

Dilution

WB~~1:1000

Format

Purified polyclonal antibody supplied in PBS with 0.09% (W/V) sodium azide. This antibody is purified through a protein A column, followed by peptide affinity purification.

Storage

Maintain refrigerated at 2-8°C for up to 2 weeks. For long term storage store at -20°C in small aliquots to prevent freeze-thaw cycles.

Precautions

RNASE9 Antibody(C-term) is for research use only and not for use in diagnostic or therapeutic procedures.

RNASE9 Antibody(C-term) - Protein Information**Name** RNASE9**Function** Does not exhibit any ribonuclease activity.

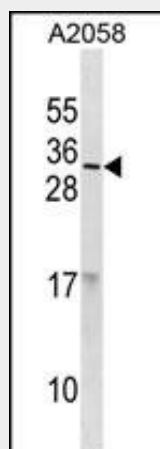
Cellular Location
Secreted.**Tissue Location**

At the mRNA level, widely expressed (PubMed:18992174). At protein level, restricted to epididymis (PubMed:19137000). Expressed in spermatozoa (sperm head and neck), with higher levels on ejaculated and epididymal sperm than on testicular sperm (at protein level). Expressed in the epithelial cells of the epididymal tubule (at protein level). Not detected in muscle

RNASE9 Antibody(C-term) - Protocols

Provided below are standard protocols that you may find useful for product applications.

- [Western Blot](#)
- [Blocking Peptides](#)
- [Dot Blot](#)
- [Immunohistochemistry](#)
- [Immunofluorescence](#)
- [Immunoprecipitation](#)
- [Flow Cytometry](#)
- [Cell Culture](#)

RNASE9 Antibody(C-term) - Images

RNASE9 Antibody (C-term) (Cat. #AP19867b) western blot analysis in A2058 cell line lysates (35ug/lane). This demonstrates the RNASE9 antibody detected the RNASE9 protein (arrow).

RNASE9 Antibody(C-term) - Background

The function of this protein is unknown.

RNASE9 Antibody(C-term) - References

Liu, J., et al. BMC Res Notes 1, 111 (2008) :
Cho, S., et al. Genomics 85(2):208-220(2005)
Devor, E.J., et al. Hum. Biol. 76(6):921-935(2004)
Penttinen, J., et al. Mol. Endocrinol. 17(11):2138-2151(2003)
Heilig, R., et al. Nature 421(6923):601-607(2003)