

**LRRC19 Antibody(C-term)**  
**Affinity Purified Rabbit Polyclonal Antibody (Pab)**  
**Catalog # AP19872b****Specification**

---

**LRRC19 Antibody(C-term) - Product Information**

Application	WB,E
Primary Accession	<a href="#">Q9H756</a>
Other Accession	<a href="#">NP_075052.1</a>
Reactivity	Human
Host	Rabbit
Clonality	Polyclonal
Isotype	Rabbit IgG
Calculated MW	42334
Antigen Region	289-318

**LRRC19 Antibody(C-term) - Additional Information****Gene ID** 64922**Other Names**

Leucine-rich repeat-containing protein 19, LRRC19

**Target/Specificity**

This LRRC19 antibody is generated from rabbits immunized with a KLH conjugated synthetic peptide between 289-318 amino acids from the C-terminal region of human LRRC19.

**Dilution**

WB~~1:1000

**Format**

Purified polyclonal antibody supplied in PBS with 0.09% (W/V) sodium azide. This antibody is purified through a protein A column, followed by peptide affinity purification.

**Storage**

Maintain refrigerated at 2-8°C for up to 2 weeks. For long term storage store at -20°C in small aliquots to prevent freeze-thaw cycles.

**Precautions**

LRRC19 Antibody(C-term) is for research use only and not for use in diagnostic or therapeutic procedures.

**LRRC19 Antibody(C-term) - Protein Information****Name** LRRC19 ([HGNC:23379](#))**Function** Pathogen-recognition receptor which mediates the activation of TRAF2- and TRAF6 NF-kappa-B signaling pathways and induces the expression of pro-inflammatory cytokines

(PubMed:[19679103](#), PubMed:[25026888](#)). In kidney, prevents infection by uropathogenic bacteria by inducing the production of cytokines, chemokines and antimicrobial substances. In gut, involved in host-microbiota interactions, plays a critical role in promoting the recruitment of immune cells and intestinal inflammation (By similarity).

**Cellular Location**

Membrane; Single-pass type I membrane protein

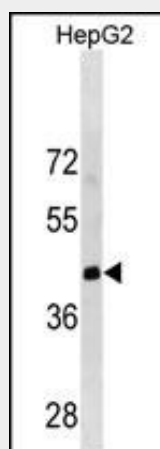
**Tissue Location**

Expressed in renal collecting duct epithelial cells.

**LRRC19 Antibody(C-term) - Protocols**

Provided below are standard protocols that you may find useful for product applications.

- [Western Blot](#)
- [Blocking Peptides](#)
- [Dot Blot](#)
- [Immunohistochemistry](#)
- [Immunofluorescence](#)
- [Immunoprecipitation](#)
- [Flow Cytometry](#)
- [Cell Culture](#)

**LRRC19 Antibody(C-term) - Images**

LRRC19 Antibody (C-term) (Cat. #AP19872b) western blot analysis in HepG2 cell line lysates (35ug/lane). This demonstrates the LRRC19 antibody detected the LRRC19 protein (arrow).

**LRRC19 Antibody(C-term) - Background**

The function of this protein is unknown.

**LRRC19 Antibody(C-term) - References**

Chai, L., et al. Biochem. Biophys. Res. Commun. 388(3):543-548(2009)