

ST6GAL1 Antibody (Center)
Affinity Purified Rabbit Polyclonal Antibody (Pab)
Catalog # AP19891c**Specification**

ST6GAL1 Antibody (Center) - Product Information

Application	WB,E
Primary Accession	P15907
Other Accession	NP_775324.1
Reactivity	Human
Host	Rabbit
Clonality	Polyclonal
Isotype	Rabbit IgG
Calculated MW	46605
Antigen Region	178-206

ST6GAL1 Antibody (Center) - Additional Information**Gene ID** 6480**Other Names**

Beta-galactoside alpha-2, 6-sialyltransferase 1, Alpha 2, 6-ST 1, B-cell antigen CD75, CMP-N-acetylneuraminate-beta-galactosamide-alpha-2, 6-sialyltransferase 1, ST6Gal I, ST6Gall, Sialyltransferase 1, ST6GAL1, SIAT1

Target/Specificity

This ST6GAL1 antibody is generated from rabbits immunized with a KLH conjugated synthetic peptide between 178-206 amino acids from the Central region of human ST6GAL1.

Dilution

WB~~1:1000

E~~Use at an assay dependent concentration.

Format

Purified polyclonal antibody supplied in PBS with 0.09% (W/V) sodium azide. This antibody is purified through a protein A column, followed by peptide affinity purification.

Storage

Maintain refrigerated at 2-8°C for up to 2 weeks. For long term storage store at -20°C in small aliquots to prevent freeze-thaw cycles.

Precautions

ST6GAL1 Antibody (Center) is for research use only and not for use in diagnostic or therapeutic procedures.

ST6GAL1 Antibody (Center) - Protein Information**Name** ST6GAL1

Synonyms SIAT1

Function Transfers sialic acid from CMP-sialic acid to galactose- containing acceptor substrates. In B lymphocytes, generates neuraminidase-sensitive lymphocyte cell-surface differentiation antigens, such as CDw75, HB-6 and CD76 (PubMed:[1730763](#)).

Cellular Location

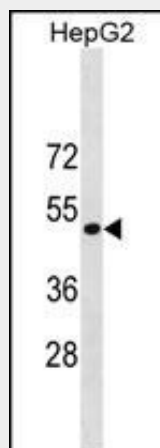
Golgi apparatus, Golgi stack membrane; Single-pass type II membrane protein. Secreted {ECO:0000250|UniProtKB:P13721}. Note=Membrane-bound form in trans cisternae of Golgi (PubMed:20378551). Secreted into the body fluid (By similarity). {ECO:0000250|UniProtKB:P13721, ECO:0000269|PubMed:20378551}

ST6GAL1 Antibody (Center) - Protocols

Provided below are standard protocols that you may find useful for product applications.

- [Western Blot](#)
- [Blocking Peptides](#)
- [Dot Blot](#)
- [Immunohistochemistry](#)
- [Immunofluorescence](#)
- [Immunoprecipitation](#)
- [Flow Cytometry](#)
- [Cell Culture](#)

ST6GAL1 Antibody (Center) - Images



ST6GAL1 Antibody (Center) (Cat. #AP19891c) western blot analysis in HepG2 cell line lysates (35ug/lane). This demonstrates the ST6GAL1 antibody detected the ST6GAL1 protein (arrow).

ST6GAL1 Antibody (Center) - Background

This gene encodes a member of glycosyltransferase family 29. The encoded protein is a type II membrane protein that catalyzes the transfer of sialic acid from CMP-sialic acid to galactose-containing substrates. The protein, which is normally found in the Golgi but can be proteolytically processed to a soluble form, is involved in the generation of the cell-surface carbohydrate determinants and differentiation antigens HB-6, CD75, and CD76. This gene has been incorrectly referred to as CD75. Three

transcript variants encoding two different isoforms have been described.

ST6GAL1 Antibody (Center) - References

Rose, J.E., et al. Mol. Med. 16 (7-8), 247-253 (2010) :
Mondal, S., et al. Leuk. Res. 34(4):463-470(2010)
Lee, M., et al. Oncol. Rep. 23(3):757-761(2010)
Daly, A.K., et al. Nat. Genet. 41(7):816-819(2009)
Costa-Nogueira, C., et al. BMC Cancer 9, 431 (2009) :