

BLOC1S3 Antibody (C-term)
Affinity Purified Rabbit Polyclonal Antibody (Pab)
Catalog # AP19902B**Specification**

BLOC1S3 Antibody (C-term) - Product Information

Application	WB,E
Primary Accession	Q6QNY0
Other Accession	NP_997715.1
Reactivity	Human
Host	Rabbit
Clonality	Polyclonal
Isotype	Rabbit IgG
Calculated MW	21256
Antigen Region	176-202

BLOC1S3 Antibody (C-term) - Additional Information**Gene ID** 388552**Other Names**

Biogenesis of lysosome-related organelles complex 1 subunit 3, BLOC-1 subunit 3, BLOC1S3, BLOS3

Target/Specificity

This BLOC1S3 antibody is generated from rabbits immunized with a KLH conjugated synthetic peptide between 176-202 amino acids from the C-terminal region of human BLOC1S3.

Dilution

WB~~1:1000

Format

Purified polyclonal antibody supplied in PBS with 0.09% (W/V) sodium azide. This antibody is purified through a protein A column, followed by peptide affinity purification.

Storage

Maintain refrigerated at 2-8°C for up to 2 weeks. For long term storage store at -20°C in small aliquots to prevent freeze-thaw cycles.

Precautions

BLOC1S3 Antibody (C-term) is for research use only and not for use in diagnostic or therapeutic procedures.

BLOC1S3 Antibody (C-term) - Protein Information**Name** BLOC1S3**Synonyms** BLOS3

Function Component of the BLOC-1 complex, a complex that is required for normal biogenesis of lysosome-related organelles (LRO), such as platelet dense granules and melanosomes. In concert with the AP-3 complex, the BLOC-1 complex is required to target membrane protein cargos into vesicles assembled at cell bodies for delivery into neurites and nerve terminals. The BLOC-1 complex, in association with SNARE proteins, is also proposed to be involved in neurite extension. Plays a role in intracellular vesicle trafficking.

Cellular Location

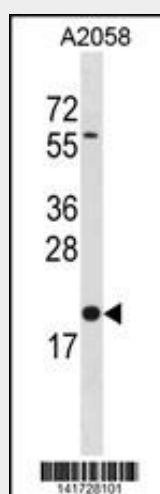
Cytoplasm.

BLOC1S3 Antibody (C-term) - Protocols

Provided below are standard protocols that you may find useful for product applications.

- [Western Blot](#)
- [Blocking Peptides](#)
- [Dot Blot](#)
- [Immunohistochemistry](#)
- [Immunofluorescence](#)
- [Immunoprecipitation](#)
- [Flow Cytometry](#)
- [Cell Culture](#)

BLOC1S3 Antibody (C-term) - Images



BLOC1S3 Antibody (C-term) (Cat. #AP19902b) western blot analysis in A2058 cell line lysates (35ug/lane). This demonstrates the BLOC1S3 antibody detected the BLOC1S3 protein (arrow).

BLOC1S3 Antibody (C-term) - Background

This gene encodes a protein that is a component of the BLOC1 multi-subunit protein complex. This complex is necessary for the biogenesis of specialized organelles of the endosomal-lysosomal system, including platelet dense granules and melanosomes. Mutations in this gene cause Hermansky-Pudlak syndrome 8, a disease characterized by lysosomal storage defects, bleeding due to platelet storage pool deficiency, and oculocutaneous albinism.

BLOC1S3 Antibody (C-term) - References

Seshadri, S., et al. JAMA 303(18):1832-1840(2010)
Lowe, J.K., et al. PLoS Genet. 5 (2), E1000365 (2009) :
Olsen, J.V., et al. Cell 127(3):635-648(2006)
Morgan, N.V., et al. Am. J. Hum. Genet. 78(1):160-166(2006)
Starcevic, M., et al. J. Biol. Chem. 279(27):28393-28401(2004)