

NR2E1 Antibody (Center)
Affinity Purified Rabbit Polyclonal Antibody (Pab)
Catalog # AP19904c**Specification**

NR2E1 Antibody (Center) - Product Information

Application	WB,E
Primary Accession	Q9Y466
Other Accession	P70052 , Q64104 , Q91379 , NP_003260.1
Reactivity	Human
Predicted	Chicken, Mouse, Xenopus
Host	Rabbit
Clonality	Polyclonal
Isotype	Rabbit IgG
Calculated MW	42589
Antigen Region	75-102

NR2E1 Antibody (Center) - Additional Information**Gene ID** 7101**Other Names**

Nuclear receptor subfamily 2 group E member 1, Nuclear receptor TLX, Protein tailless homolog, TII, hTII, NR2E1, TLX

Target/Specificity

This NR2E1 antibody is generated from rabbits immunized with a KLH conjugated synthetic peptide between 75-102 amino acids from the Central region of human NR2E1.

Dilution

WB~~1:1000

E~~Use at an assay dependent concentration.

Format

Purified polyclonal antibody supplied in PBS with 0.09% (W/V) sodium azide. This antibody is purified through a protein A column, followed by peptide affinity purification.

Storage

Maintain refrigerated at 2-8°C for up to 2 weeks. For long term storage store at -20°C in small aliquots to prevent freeze-thaw cycles.

Precautions

NR2E1 Antibody (Center) is for research use only and not for use in diagnostic or therapeutic procedures.

NR2E1 Antibody (Center) - Protein Information**Name** NR2E1

Synonyms TLX

Function Orphan receptor that binds DNA as a monomer to hormone response elements (HRE) containing an extended core motif half-site sequence 5'-AAGGTCA-3' in which the 5' flanking nucleotides participate in determining receptor specificity (By similarity). May be required to pattern anterior brain differentiation. Involved in the regulation of retinal development and essential for vision. During retinogenesis, regulates PTEN-Cyclin D expression via binding to the promoter region of PTEN and suppressing its activity (By similarity). May be involved in retinoic acid receptor (RAR) regulation in retinal cells.

Cellular Location

Nucleus {ECO:0000255|PROSITE-ProRule:PRU00407}.

Tissue Location

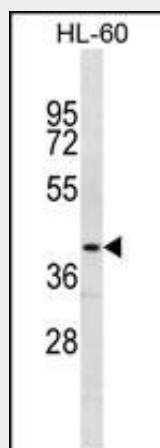
Brain specific. Present in all brain sections tested, highest levels in the caudate nucleus and hippocampus, weakest levels in the thalamus.

NR2E1 Antibody (Center) - Protocols

Provided below are standard protocols that you may find useful for product applications.

- [Western Blot](#)
- [Blocking Peptides](#)
- [Dot Blot](#)
- [Immunohistochemistry](#)
- [Immunofluorescence](#)
- [Immunoprecipitation](#)
- [Flow Cytometry](#)
- [Cell Culture](#)

NR2E1 Antibody (Center) - Images



NR2E1 Antibody (Center) (Cat. #AP19904c) western blot analysis in HL-60 cell line lysates (35ug/lane). This demonstrates the NR2E1 antibody detected the NR2E1 protein (arrow).

NR2E1 Antibody (Center) - Background

Orphan receptor that binds DNA as a monomer to hormone response elements (HRE) containing an extended core motif half-site sequence 5'-AAGGTCA-3' in which the 5' flanking nucleotides participate in determining receptor specificity. May be required for brain development. May be

involved in the regulation of retinal development (By similarity).

NR2E1 Antibody (Center) - References

Liu, H.K., et al. Genes Dev. 24(7):683-695(2010)
Iwahara, N., et al. Biochem. Biophys. Res. Commun. 386(4):671-675(2009)
de Krom, M., et al. Biol. Psychiatry 65(7):625-630(2009)
Kumar, R.A., et al. Am. J. Med. Genet. B Neuropsychiatr. Genet. 147B (6), 880-889 (2008) :
Yokoyama, A., et al. Mol. Cell. Biol. 28(12):3995-4003(2008)