

**FKBP14 Antibody (C-term)**  
**Affinity Purified Rabbit Polyclonal Antibody (Pab)**  
**Catalog # AP19912b****Specification**

---

**FKBP14 Antibody (C-term) - Product Information**

|                   |                             |
|-------------------|-----------------------------|
| Application       | WB,E                        |
| Primary Accession | <a href="#">O9NWM8</a>      |
| Other Accession   | <a href="#">NP_060416.1</a> |
| Reactivity        | Human                       |
| Host              | Rabbit                      |
| Clonality         | Polyclonal                  |
| Isotype           | Rabbit IgG                  |
| Calculated MW     | 24172                       |
| Antigen Region    | 143-172                     |

**FKBP14 Antibody (C-term) - Additional Information****Gene ID** 55033**Other Names**

Peptidyl-prolyl cis-trans isomerase FKBP14, PPIase FKBP14, 22 kDa FK506-binding protein, 22 kDa FKBP, FKBP-22, FK506-binding protein 14, FKBP-14, Rotamase, FKBP14, FKBP22

**Target/Specificity**

This FKBP14 antibody is generated from rabbits immunized with a KLH conjugated synthetic peptide between 143-172 amino acids from the C-terminal region of human FKBP14.

**Dilution**

WB~~1:1000

E~~Use at an assay dependent concentration.

**Format**

Purified polyclonal antibody supplied in PBS with 0.09% (W/V) sodium azide. This antibody is purified through a protein A column, followed by peptide affinity purification.

**Storage**

Maintain refrigerated at 2-8°C for up to 2 weeks. For long term storage store at -20°C in small aliquots to prevent freeze-thaw cycles.

**Precautions**

FKBP14 Antibody (C-term) is for research use only and not for use in diagnostic or therapeutic procedures.

**FKBP14 Antibody (C-term) - Protein Information****Name** FKBP14

## Synonyms FKBP22

**Function** PPlase which accelerates the folding of proteins during protein synthesis. Has a preference for substrates containing 4- hydroxylproline modifications, including type III collagen. May also target type VI and type X collagens.

## Cellular Location

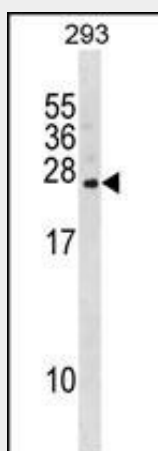
Endoplasmic reticulum lumen {ECO:0000255|PROSITE- ProRule:PRU10138, ECO:0000269|PubMed:22265013}

## FKBP14 Antibody (C-term) - Protocols

Provided below are standard protocols that you may find useful for product applications.

- [Western Blot](#)
- [Blocking Peptides](#)
- [Dot Blot](#)
- [Immunohistochemistry](#)
- [Immunofluorescence](#)
- [Immunoprecipitation](#)
- [Flow Cytometry](#)
- [Cell Culture](#)

## FKBP14 Antibody (C-term) - Images



FKBP14 Antibody (C-term) (Cat. #AP19912b) western blot analysis in 293 cell line lysates (35ug/lane). This demonstrates the FKBP14 antibody detected the FKBP14 protein (arrow).

## FKBP14 Antibody (C-term) - Background

PPlases accelerate the folding of proteins during protein synthesis.

## FKBP14 Antibody (C-term) - References

Zhang, Z., et al. Protein Sci. 13(10):2819-2824(2004)  
Clark, H.F., et al. Genome Res. 13(10):2265-2270(2003)  
Patterson, C.E., et al. Genomics 79(6):881-889(2002)