

RXFP1 Antibody (C-term)
Affinity Purified Rabbit Polyclonal Antibody (Pab)
Catalog # AP19927B**Specification**

RXFP1 Antibody (C-term) - Product Information

Application	WB,E
Primary Accession	O9HBX9
Other Accession	NP_067647.2
Reactivity	Human
Host	Rabbit
Clonality	Polyclonal
Isotype	Rabbit IgG
Calculated MW	86975
Antigen Region	685-713

RXFP1 Antibody (C-term) - Additional Information**Gene ID** 59350**Other Names**

Relaxin receptor 1, Leucine-rich repeat-containing G-protein coupled receptor 7, Relaxin family peptide receptor 1, RXFP1, LGR7

Target/Specificity

This RXFP1 antibody is generated from rabbits immunized with a KLH conjugated synthetic peptide between 685-713 amino acids from the C-terminal region of human RXFP1.

Dilution

WB~~1:1000

E~~Use at an assay dependent concentration.

Format

Purified polyclonal antibody supplied in PBS with 0.09% (W/V) sodium azide. This antibody is purified through a protein A column, followed by peptide affinity purification.

Storage

Maintain refrigerated at 2-8°C for up to 2 weeks. For long term storage store at -20°C in small aliquots to prevent freeze-thaw cycles.

Precautions

RXFP1 Antibody (C-term) is for research use only and not for use in diagnostic or therapeutic procedures.

RXFP1 Antibody (C-term) - Protein Information**Name** RXFP1

Synonyms LGR7

Function Receptor for relaxins. The activity of this receptor is mediated by G proteins leading to stimulation of adenylate cyclase and an increase of cAMP. Binding of the ligand may also activate a tyrosine kinase pathway that inhibits the activity of a phosphodiesterase that degrades cAMP.

Cellular Location

Cell membrane; Multi-pass membrane protein

Tissue Location

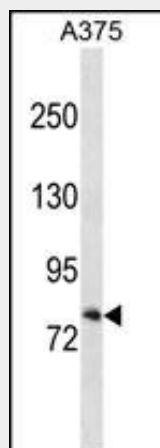
Expressed in the brain, kidney, testis, placenta, uterus, ovary, adrenal, prostate, skin and heart. Not detected in spleen.

RXFP1 Antibody (C-term) - Protocols

Provided below are standard protocols that you may find useful for product applications.

- [Western Blot](#)
- [Blocking Peptides](#)
- [Dot Blot](#)
- [Immunohistochemistry](#)
- [Immunofluorescence](#)
- [Immunoprecipitation](#)
- [Flow Cytometry](#)
- [Cell Culture](#)

RXFP1 Antibody (C-term) - Images



RXFP1 Antibody (C-term) (Cat. #AP19927b) western blot analysis in A375 cell line lysates (35ug/lane). This demonstrates the RXFP1 antibody detected the RXFP1 protein (arrow).

RXFP1 Antibody (C-term) - Background

Receptor for relaxins. The activity of this receptor is mediated by G proteins leading to stimulation of adenylate cyclase and an increase of cAMP. Binding of the ligand may also activate a tyrosine kinase pathway that inhibits the activity of a phosphodiesterase that degrades cAMP.

RXFP1 Antibody (C-term) - References

Halls, M.L., et al. EMBO J. 29(16):2772-2787(2010)

Singh, S., et al. Mol. Cell. Endocrinol. 315 (1-2), 239-245 (2010) :
Talmud, P.J., et al. Am. J. Hum. Genet. 85(5):628-642(2009)
Feng, S., et al. Ann. N. Y. Acad. Sci. 1160, 379-380 (2009) :
Li, Z., et al. Ann. N. Y. Acad. Sci. 1160, 374-378 (2009) :