

**RAB7B Antibody (C-term)**  
**Affinity Purified Rabbit Polyclonal Antibody (Pab)**  
**Catalog # AP19936B****Specification**

---

**RAB7B Antibody (C-term) - Product Information**

Application	WB,E
Primary Accession	<a href="#">Q96AH8</a>
Other Accession	<a href="#">NP_796377.3</a>
Reactivity	Human
Host	Rabbit
Clonality	Polyclonal
Isotype	Rabbit IgG
Calculated MW	22511
Antigen Region	168-197

**RAB7B Antibody (C-term) - Additional Information****Gene ID** 338382**Other Names**

Ras-related protein Rab-7b, RAB7B

**Target/Specificity**

This RAB7B antibody is generated from rabbits immunized with a KLH conjugated synthetic peptide between 168-197 amino acids from the C-terminal region of human RAB7B.

**Dilution**

WB~~1:1000

**Format**

Purified polyclonal antibody supplied in PBS with 0.09% (W/V) sodium azide. This antibody is purified through a protein A column, followed by peptide affinity purification.

**Storage**

Maintain refrigerated at 2-8°C for up to 2 weeks. For long term storage store at -20°C in small aliquots to prevent freeze-thaw cycles.

**Precautions**

RAB7B Antibody (C-term) is for research use only and not for use in diagnostic or therapeutic procedures.

**RAB7B Antibody (C-term) - Protein Information****Name** RAB7B

**Function** Controls vesicular trafficking from endosomes to the trans- Golgi network (TGN). Acts as a negative regulator of TLR9 signaling and can suppress TLR9-triggered TNFA, IL6, and IFNB

production in macrophages by promoting TLR9 lysosomal degradation. Also negatively regulates TLR4 signaling in macrophages by promoting lysosomal degradation of TLR4. Promotes megakaryocytic differentiation by increasing NF-kappa-B-dependent IL6 production and subsequently enhancing the association of STAT3 with GATA1. Not involved in the regulation of the EGF- and EGFR degradation pathway.

#### **Cellular Location**

Late endosome. Lysosome Golgi apparatus. Golgi apparatus, trans- Golgi network. Cytoplasmic vesicle, phagosome. Cytoplasmic vesicle, phagosome membrane; Lipid-anchor; Cytoplasmic side. Note=Recruited to phagosomes containing S.aureus or M.tuberculosis.

#### **Tissue Location**

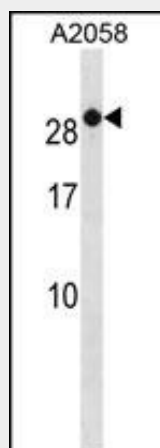
Expressed in heart, placenta, lung, skeletal muscle and peripheral blood leukocyte.

### **RAB7B Antibody (C-term) - Protocols**

Provided below are standard protocols that you may find useful for product applications.

- [Western Blot](#)
- [Blocking Peptides](#)
- [Dot Blot](#)
- [Immunohistochemistry](#)
- [Immunofluorescence](#)
- [Immunoprecipitation](#)
- [Flow Cytometry](#)
- [Cell Culture](#)

### **RAB7B Antibody (C-term) - Images**



RAB7B Antibody (C-term) (Cat. #AP19936b) western blot analysis in A2058 cell line lysates (35ug/lane). This demonstrates the RAB7B antibody detected the RAB7B protein (arrow).

### **RAB7B Antibody (C-term) - Background**

Protein transport. Probably involved in vesicular traffic (By similarity).

### **RAB7B Antibody (C-term) - References**

Progida, C., et al. J. Cell. Sci. 123 (PT 9), 1480-1491 (2010) :  
Yang, M., et al. Biochem. Biophys. Res. Commun. 318(3):792-799(2004)