

TIAM1 Antibody (C-term)
Affinity Purified Rabbit Polyclonal Antibody (Pab)
Catalog # AP19942b**Specification**

TIAM1 Antibody (C-term) - Product Information

Application	WB,E
Primary Accession	Q13009
Other Accession	Q60610 , NP_003244.2
Reactivity	Human
Predicted	Mouse
Host	Rabbit
Clonality	Polyclonal
Isotype	Rabbit IgG
Antigen Region	1478-1506

TIAM1 Antibody (C-term) - Additional Information**Gene ID** 7074**Other Names**

T-lymphoma invasion and metastasis-inducing protein 1, TIAM-1, TIAM1

Target/Specificity

This TIAM1 antibody is generated from rabbits immunized with a KLH conjugated synthetic peptide between 1478-1506 amino acids from the C-terminal region of human TIAM1.

Dilution

WB~~1:2000

Format

Purified polyclonal antibody supplied in PBS with 0.09% (W/V) sodium azide. This antibody is purified through a protein A column, followed by peptide affinity purification.

Storage

Maintain refrigerated at 2-8°C for up to 2 weeks. For long term storage store at -20°C in small aliquots to prevent freeze-thaw cycles.

Precautions

TIAM1 Antibody (C-term) is for research use only and not for use in diagnostic or therapeutic procedures.

TIAM1 Antibody (C-term) - Protein Information**Name** TIAM1 {ECO:0000303|PubMed:7731688, ECO:0000312|HGNC:HGNC:11805}**Function** Guanyl-nucleotide exchange factor that activates RHO-like proteins and connects extracellular signals to cytoskeletal activities. Activates RAC1, CDC42, and to a lesser extent RHOA

and their downstream signaling to regulate processes like cell adhesion and cell migration.

Cellular Location

Cell junction. Cell membrane; Peripheral membrane protein; Cytoplasmic side. Note=Detected at the boundary between cells with actin-rich protrusions (By similarity). Presence of KRIT1, CDH5 and RAP1B is required for its localization to the cell junction

Tissue Location

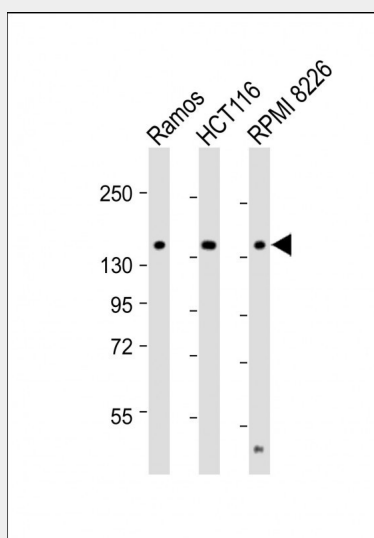
Found in virtually all analyzed tumor cell lines including B- and T-lymphomas, neuroblastomas, melanomas and carcinomas

TIAM1 Antibody (C-term) - Protocols

Provided below are standard protocols that you may find useful for product applications.

- [Western Blot](#)
- [Blocking Peptides](#)
- [Dot Blot](#)
- [Immunohistochemistry](#)
- [Immunofluorescence](#)
- [Immunoprecipitation](#)
- [Flow Cytometry](#)
- [Cell Culture](#)

TIAM1 Antibody (C-term) - Images



All lanes : Anti-TIAM1 Antibody (C-term) at 1:2000 dilution Lane 1: Ramos whole cell lysate Lane 2: HCT116 whole cell lysate Lane 3: RPMI 8226 whole cell lysate Lysates/proteins at 20 µg per lane. Secondary Goat Anti-Rabbit IgG, (H+L), Peroxidase conjugated at 1/10000 dilution. Predicted band size : 178 kDa Blocking/Dilution buffer: 5% NFDN/TBST.

TIAM1 Antibody (C-term) - Background

Modulates the activity of RHO-like proteins and connects extracellular signals to cytoskeletal activities. Acts as a GDP-dissociation stimulator protein that stimulates the GDP-GTP exchange activity of RHO-like GTPases and activates them. Activates RAC1, CDC42, and to a lesser extent RHOA.

TIAM1 Antibody (C-term) - References

Yang, W., et al. Jpn. J. Clin. Oncol. 40(11):1053-1059(2010)
Moriarty, C.H., et al. J. Biol. Chem. 285(27):20541-20546(2010)
Rose, J.E., et al. Mol. Med. 16 (7-8), 247-253 (2010) :
Rajagopal, S., et al. J. Biol. Chem. 285(23):18060-18071(2010)
Shepherd, T.R., et al. J. Mol. Biol. 398(5):730-746(2010)